

**Glebe, NSW**  
412/131 Ross Street

**1**  
BED

**1**  
BATH



**Oversized 1-Bedroom Apartment in Mirvac's Harold Park**

Welcome to Harold Park, Glebe's Secret Backyard.

Here in Harold Park you will find yourself in an idyllic parkside location, with only a short walk to Glebe Foreshore. Just meters away, The Tramsheds retail precinct resides featuring cafes, a grocery store, restaurants and a medical centre.

This 71sqm, 4th floor apartment features:

- Spacious bedroom with generous built-in wardrobe
- Open-plan living and dining area, leading to balcony
- Contemporary kitchen with stone benchtop and built-in Miele appliances

**\$800 pw | Deposit Taken!**

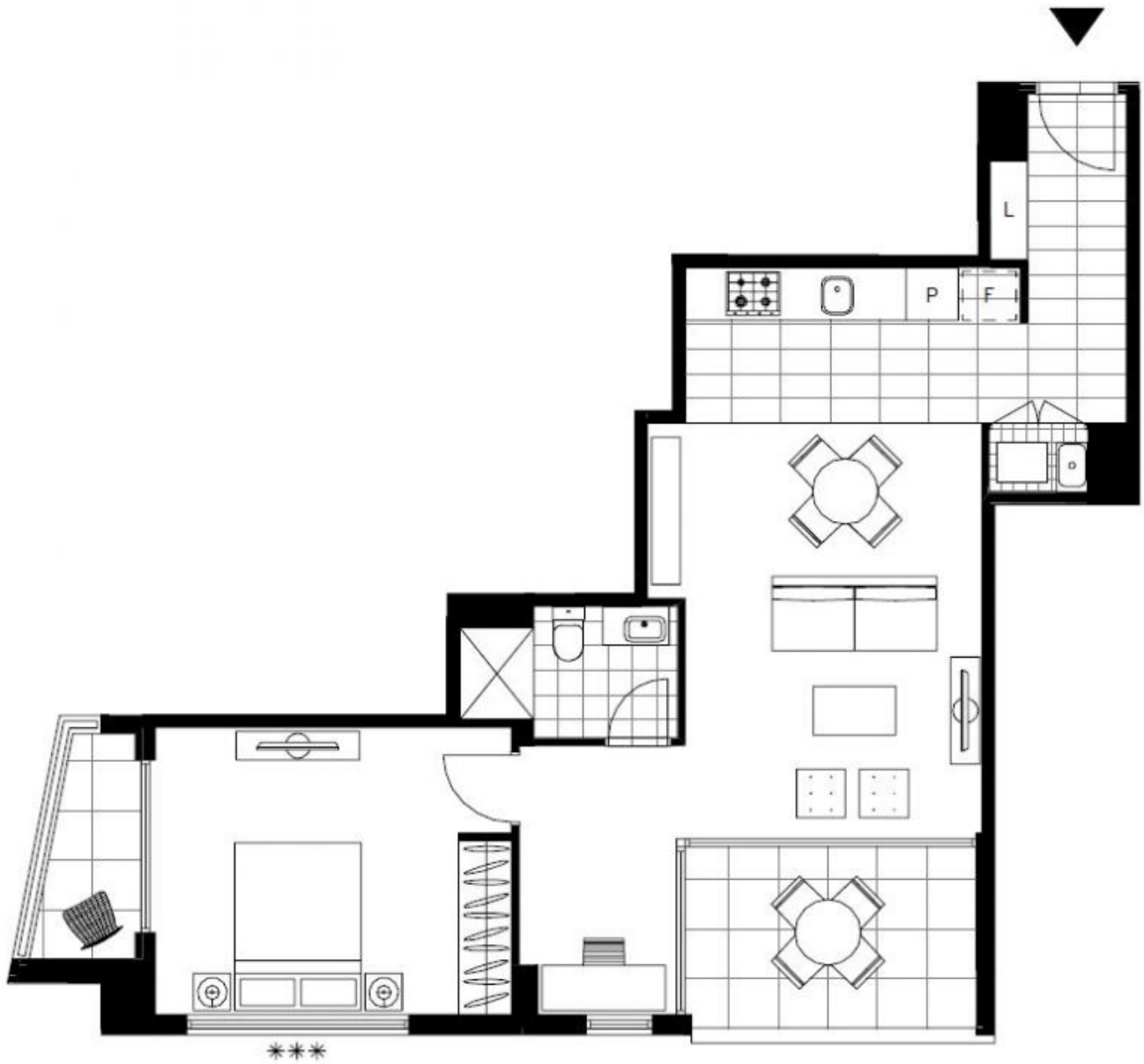
**Contact:** Naz Sabzpour  
02 8588 8888  
0401 545 440

**Type:** Apartment

**Date Available:** 04/07/2023

**Bond:** \$3200

**<https://www.resbymirvac.com>**



Plans shown are only indicative of layout. Dimensions are approximate.

**Glebe, NSW**  
412/131 Ross Street