

Glebe, NSW
412/131 Ross Street

1
BED

1
BATH



Oversized 1-Bedroom Apartment in Mirvac's Harold Park

Welcome to Harold Park, Glebe's Secret Backyard.

Here in Harold Park you will find yourself in an idyllic parkside location, with only a short walk to Glebe Foreshore. Just meters away, The Tramsheds retail precinct resides featuring cafes, a grocery store, restaurants and a medical centre.

This 71sqm, 4th floor apartment features:

- Spacious bedroom with generous built-in wardrobe
- Open-plan living and dining area, leading to balcony
- Contemporary kitchen with stone benchtop and built-in Miele appliances

\$800 pw | Deposit Taken!

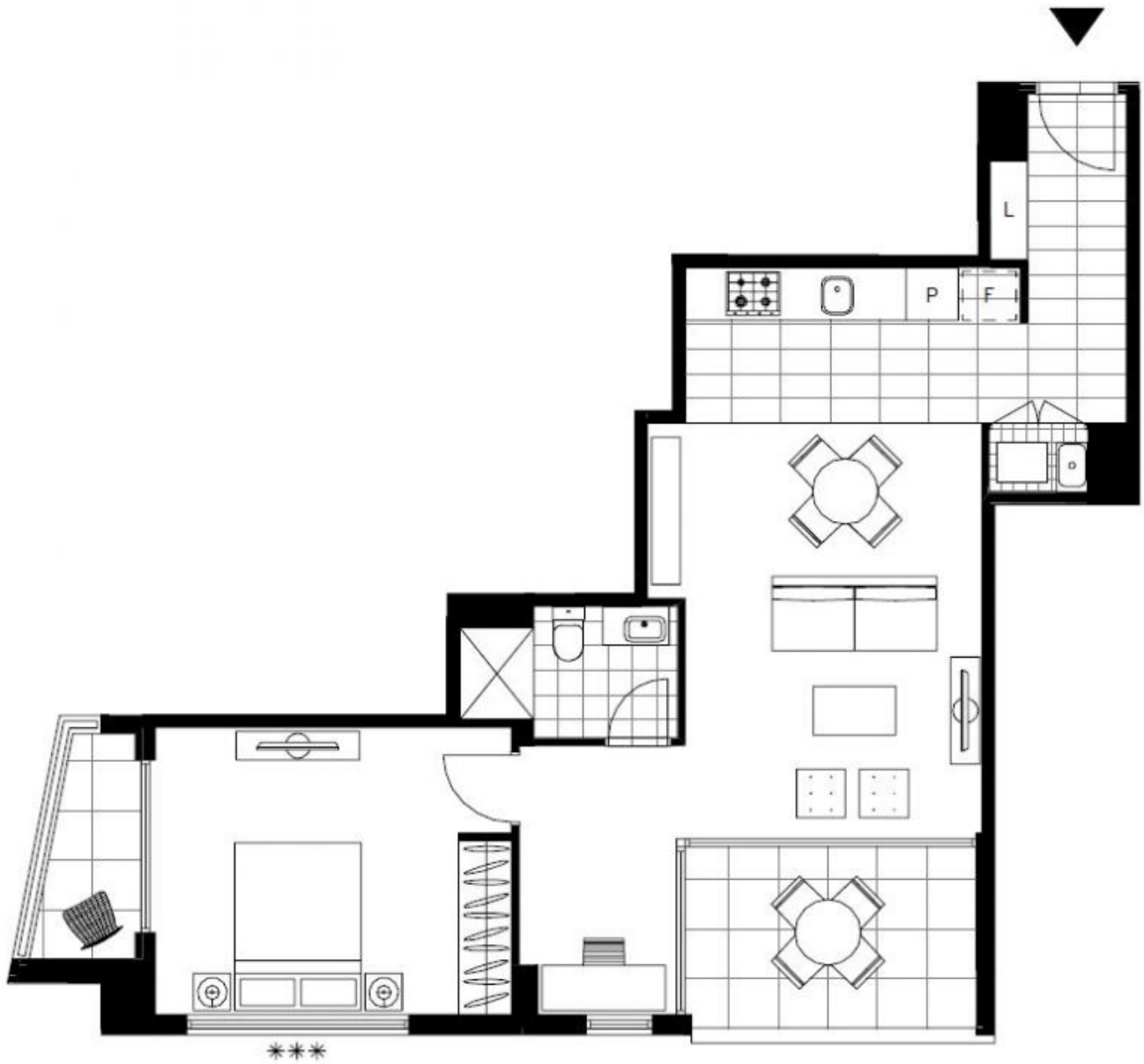
Contact: Naz Sabzpour
02 8588 8888
0401 545 440

Type: Apartment

Date Available: 04/07/2023

Bond: \$3200

<https://www.resbymirvac.com>



Plans shown are only indicative of layout. Dimensions are approximate.

Glebe, NSW
412/131 Ross Street