



Glebe, NSW

403/1 Cullen Close

1
BED

1
BATH



Modern 1-Bedroom unit in Harold Park!

Welcome to Harold Park, Glebe's Secret Backyard.

Here in Harold Park you will find yourself in an idyllic parkside location, with only a short walk to Glebe Foreshore. Just meters away, The Tramsheds retail precinct resides featuring cafes, a grocery store, restaurants and a medical centre.

This 61sqm, Level 4 unit offers:

- Large double bedroom with built-in wardrobe
- Modern galley kitchen with Miele appliances
- Living area offering lots of natural-light
- Spacious balcony with views of internal gardens
- Internal laundry with washer and dryer included

Deposit taken | \$800 per week

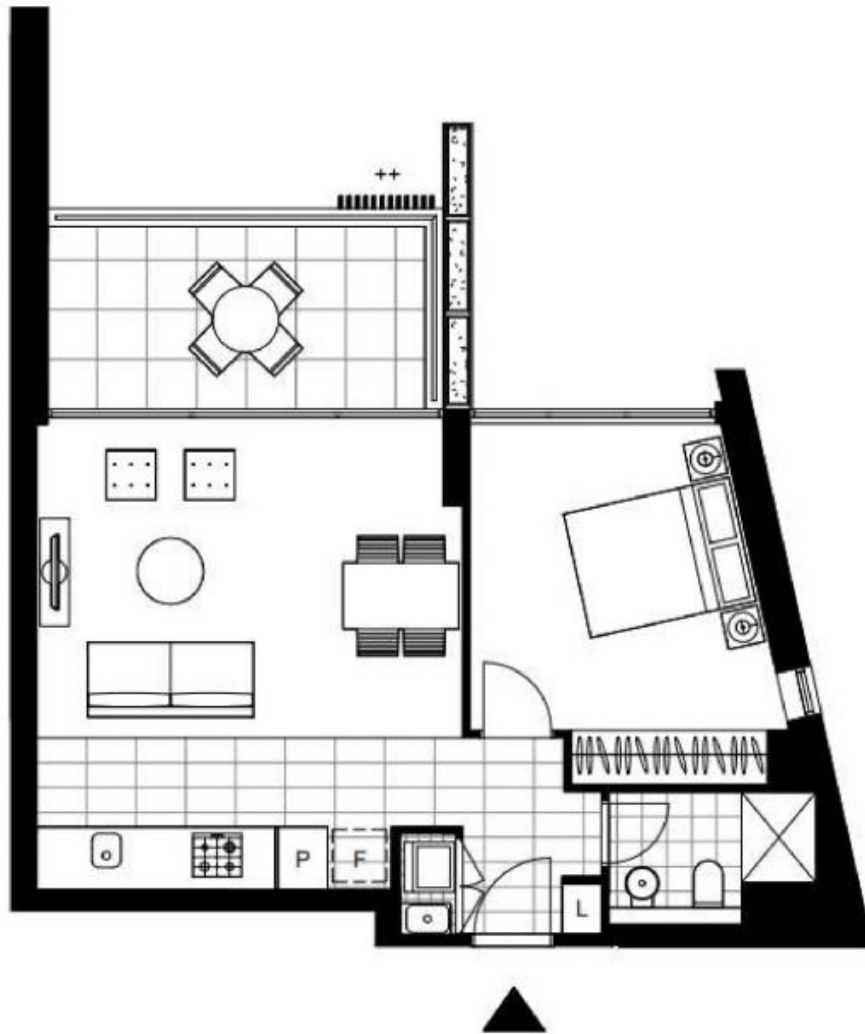
Contact: Naz Sabzpouri
02 8588 8888
0401 545 440

Type: Apartment

Date Available: 27/06/2023

Bond: \$3120

<https://www.resbymirvac.com>



LEVEL 4

Plans shown are only indicative of layout. Dimensions are approximate.

Glebe, NSW
403/1 Cullen Close