

## Glebe, NSW

2701/7 Scotsman Street

**1**  
BED

**1**  
BATH



### Oversized One Bedroom Apartment with Study in Mirvac's Harold Park

Welcome to Harold Park, Glebe's Secret Backyard.

Here in Harold Park you will find yourself in an idyllic parkside location, with only a short walk to Glebe Foreshore. Just meters away, The Tramsheds retail precinct resides featuring cafes, a grocery store, restaurants and a medical centre.

This 7th floor, 67sqm apartment features:

- Well-appointed bedroom with floor-to-ceiling built-in wardrobe
- Sunny open-plan living and dining area
- Sleek kitchen with stone benchtop and built-in Miele appliances

### Deposit Taken

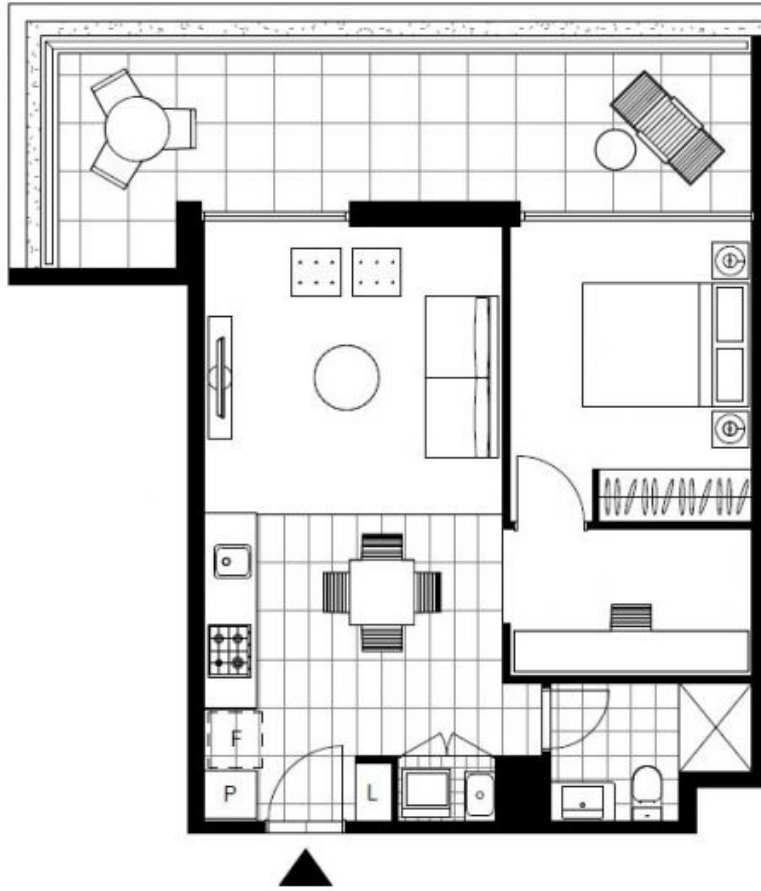
**Contact:** Naz Sabzpouri  
02 8588 8888  
0401 545 440

**Type:** Apartment

**Date Available:** 08/06/2023

**Bond:** \$2800

<https://www.resbymirvac.com>



Plans shown are only indicative of layout. Dimensions are approximate.

**Glebe, NSW**  
2701/7 Scotsman Street