



## Glebe, NSW

110/172 Ross Street

**3** BED **2** BATH **2** CAR 

### Premium 3-Bedroom Apartment with Views & Parking in Harold Park

Welcome to Harold Park, Glebe.

Here in Harold Park you will find yourself in an idyllic parkside location, with only a short walk to Glebe Foreshore. Just meters away, The Tramsheds retail precinct resides featuring cafes, a grocery store, restaurants and a medical centre.

This stunning three bedroom has to offer;

- Functional living and dining areas, with access to the balcony
- Large North-West facing balcony overlooking Johnson's creek
- Quality kitchen with stone benchtops and built-in Miele appliances

**\$1500 per week | Deposit Taken**

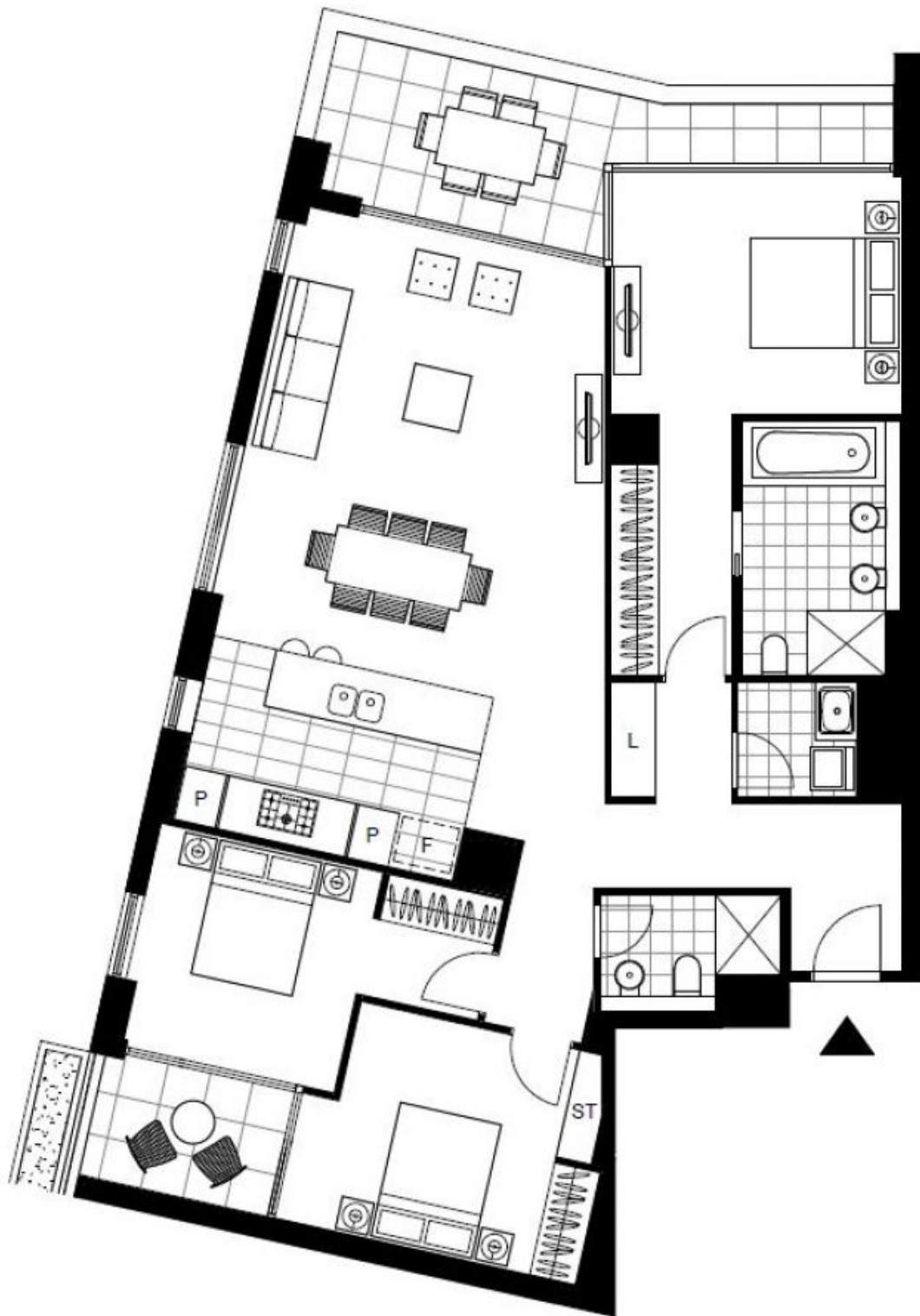
**Contact:** Naz Sabzpouri  
02 8588 8888  
0401 545 440

**Type:** Apartment

**Date Available:** 12/06/2023

**Bond:** \$6000

<https://www.resbymirvac.com>



Plans shown are only indicative of layout. Dimensions are approximate.

**Glebe, NSW**  
110/172 Ross Street