



Glebe, NSW
110/172 Ross Street

3 BED **2** BATH **2** CAR 

Premium 3-Bedroom Apartment with Views & Parking in Harold Park

Welcome to Harold Park, Glebe.

Here in Harold Park you will find yourself in an idyllic parkside location, with only a short walk to Glebe Foreshore. Just meters away, The Tramsheds retail precinct resides featuring cafes, a grocery store, restaurants and a medical centre.

This stunning three bedroom has to offer;

- Functional living and dining areas, with access to the balcony
- Large North-West facing balcony overlooking Johnson's creek
- Quality kitchen with stone benchtops and built-in Miele appliances

\$1500 per week | Deposit Taken

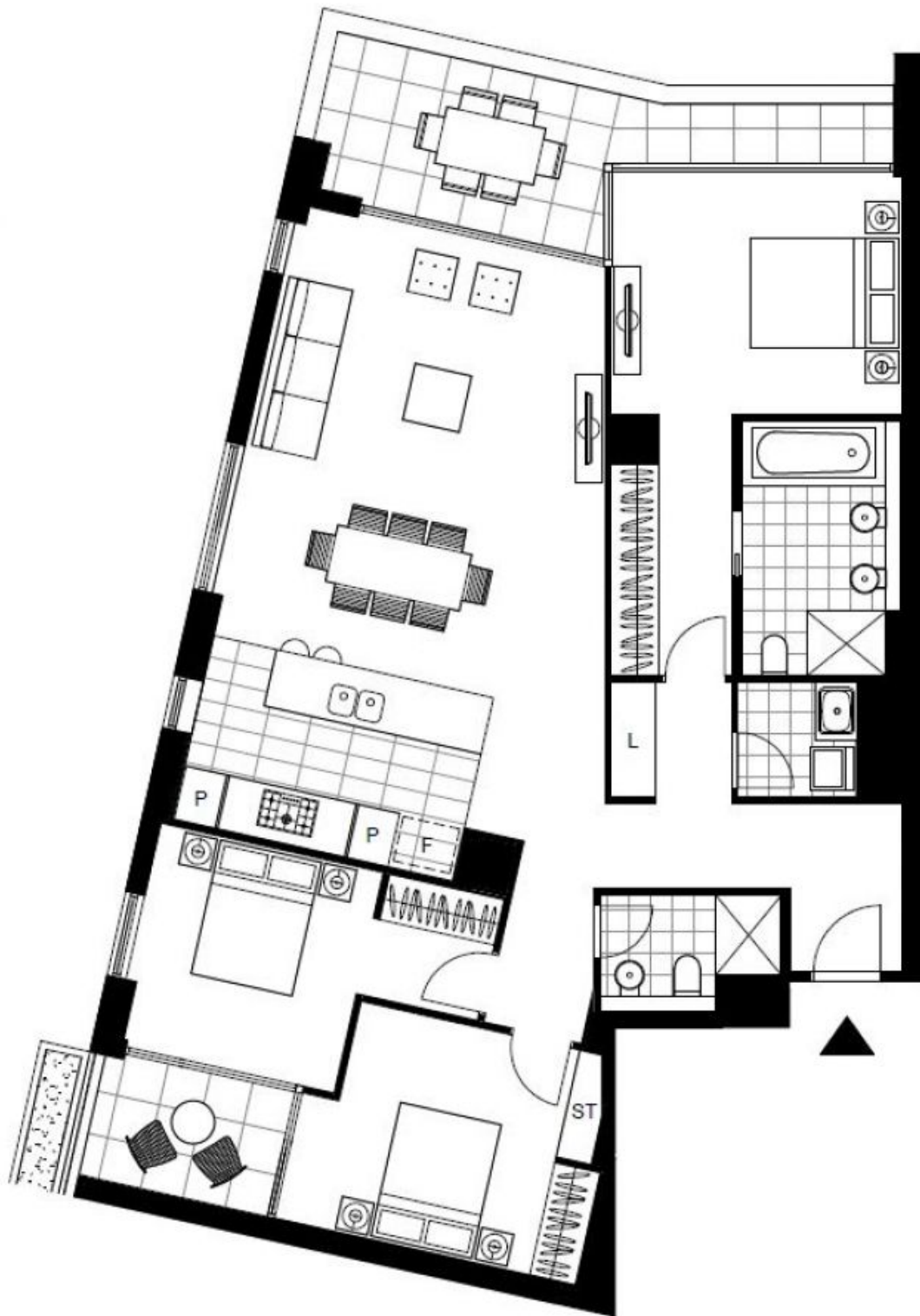
Contact: Naz Sabzpouri
02 8588 8888
0401 545 440

Type: Apartment

Date Available: 12/06/2023

Bond: \$6000

<https://www.resbymirvac.com>



Plans shown are only indicative of layout. Dimensions are approximate.

Glebe, NSW
110/172 Ross Street