



**Glebe, NSW**  
602/1 Cullen Close

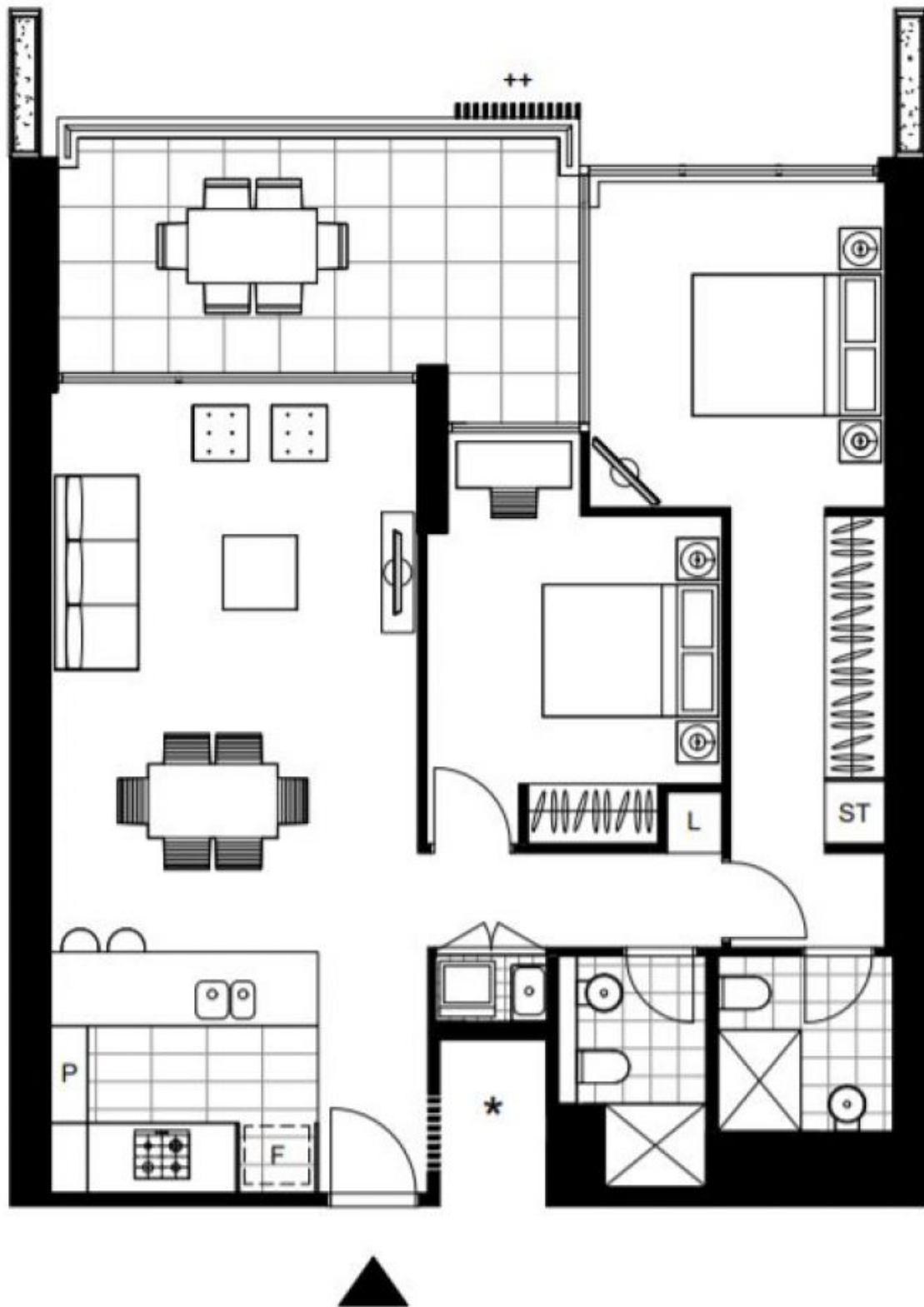
**2** BED **2** BATH **1** CAR 

**Mirvac masterpiece: north facing 2 bedroom apartment with canal views**

Discover the epitome of modern urban living with this exquisite 2 bedroom residence nestled in the desirable Forest Lodge neighbourhood. Boasting a prime location just 300m away from the iconic Tramsheds, this residence offers a sophisticated and convenient lifestyle for those seeking the perfect blend of comfort and convenience.

As you step into this Mirvac-built gem, you'll be captivated by the seamless fusion of style and functionality. The spacious open-plan design creates an inviting ambiance, providing an ideal space for both relaxation and entertainment. Natural light cascades through large windows, accentuating the high-quality finishes and contemporary fixtures.

**Sold \$1,670,000**  
**Council Rates:** \$289/qtr (approx)  
**Strata Rates:** \$1,406/qtr (approx)  
**Contact:** William Kwok  
 0285888888  
 0481 702 370  
 Emily Seymour  
 02 8588 8888  
 0497 333 559  
**Type:** Apartment  
**Sold Date:** 21/06/2023  
**Land:** 95Square Metres  
<https://www.resbymirvac.com>



Plans shown are only indicative of layout. Dimensions are approximate.

**Glebe, NSW**  
602/1 Cullen Close