



**Glebe, NSW**  
602/1 Cullen Close

**2** BED **2** BATH **1** CAR 

**Mirvac masterpiece: north facing 2 bedroom apartment with canal views**

Discover the epitome of modern urban living with this exquisite 2 bedroom residence nestled in the desirable Forest Lodge neighbourhood. Boasting a prime location just 300m away from the iconic Tramsheds, this residence offers a sophisticated and convenient lifestyle for those seeking the perfect blend of comfort and convenience.

As you step into this Mirvac-built gem, you'll be captivated by the seamless fusion of style and functionality. The spacious open-plan design creates an inviting ambiance, providing an ideal space for both relaxation and entertainment. Natural light cascades through large windows, accentuating the high-quality finishes and contemporary fixtures.

**Sold \$1,670,000**

**Council Rates:** \$289/qtr (approx)

**Strata Rates:** \$1,406/qtr (approx)

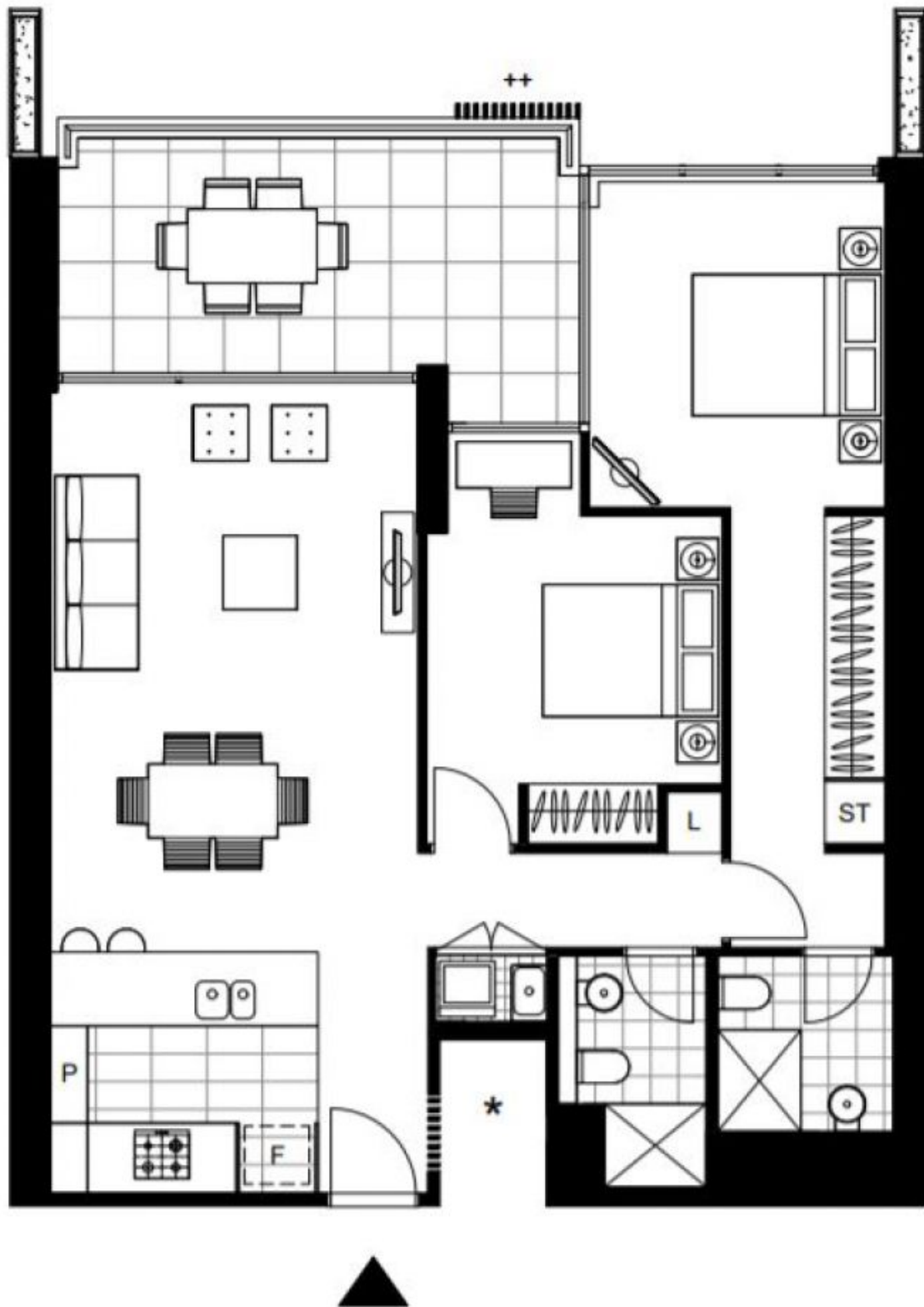
**Contact:** Matthew Matthews  
02 8588 8888  
0418 266 590  
Emily Seymour  
02 8588 8888  
0497 333 559

**Type:** Apartment

**Sold Date:** 21/06/2023

**Land:** 95Square Metres

<https://www.resbymirvac.com>



Plans shown are only indicative of layout. Dimensions are approximate.

**Glebe, NSW**  
602/1 Cullen Close