



Glebe, NSW

116/6 Maxwell Road

1
BED

1
BATH



Furnished One Bedroom Apartment in Mirvac's Harold Park

Welcome to Harold Park!

Here in Harold Park you will find yourself in an idyllic parkside location, with only a short walk to Glebe Foreshore. Just meters away, The Tramsheds retail precinct resides featuring cafes, a grocery store, restaurants and a medical centre.

This beautifully furnished, 79sqm 1-bedroom apartment features:

- Large bedroom with floor-to-ceiling built-in wardrobe
- Spacious tiled living and dining area, with access to balcony
- Contemporary kitchen with stone benchtop and built-in Miele appliances

Deposit Taken!

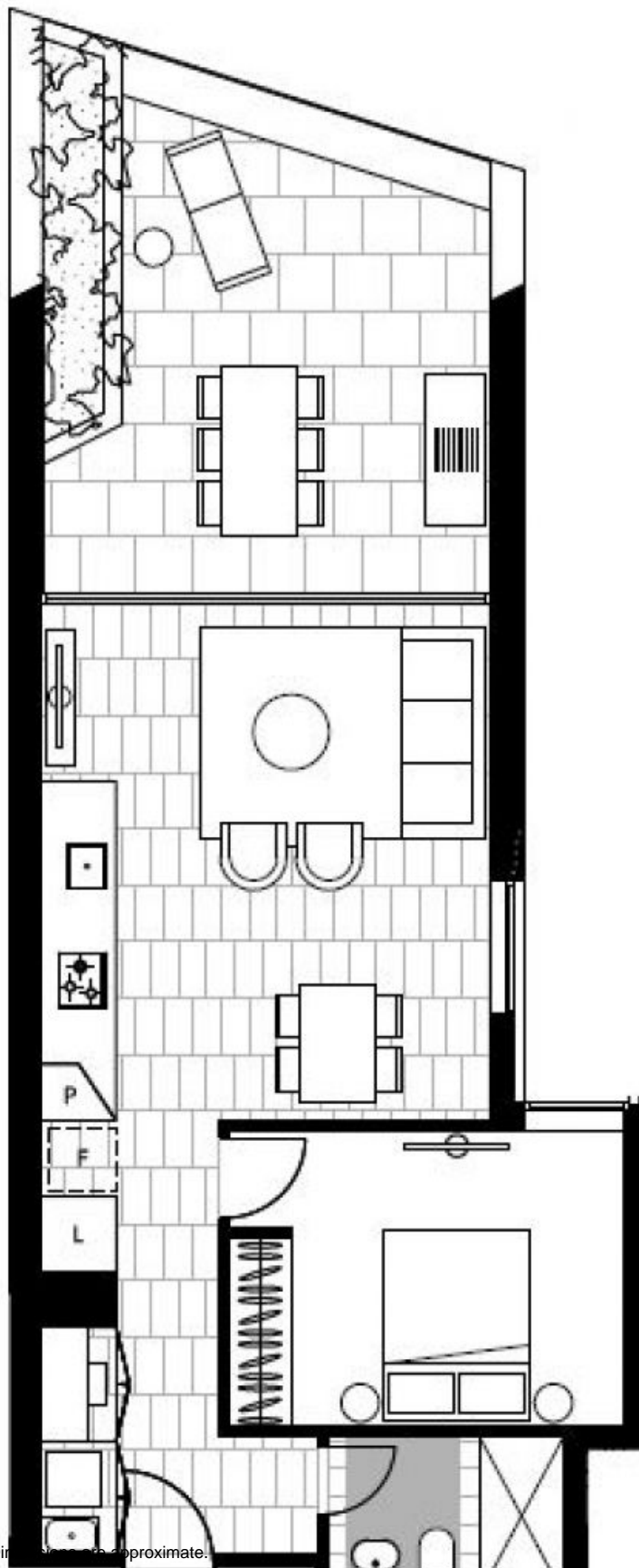
Contact: Naz Sabzpouri
02 8588 8888
0401 545 440

Type: Apartment

Date Available: 07/06/2023

Bond: \$3300

<https://www.resbymirvac.com>



Plans shown are only indicative of layout. Dimensions shown are approximate.

Glebe, NSW
116/6 Maxwell Road

LEVEL 1