

## Glebe, NSW

602/1 Cullen Close

**2** **2** **1** **RES**  
BED BATH CAR

### North facing 2-Bedroom Apartment with Parking in Mirvac's Harold Park

Welcome to Harold Park!

Here in Harold Park you will find yourself in an idyllic parkside location, with only a short walk to Glebe Foreshore. Just meters away, The Tramsheds retail precinct resides featuring cafes, a grocery store, restaurants and a medical centre.

This 95sqm, 6th floor apartment features:

- Spacious bedrooms with floor to ceiling built-in wardrobes
- Open plan living and dining area, with access to entertainers balcony
- Stylish kitchen with stone island benchtops and built in Miele appliances

**\$1000 per week | Parking Included!**

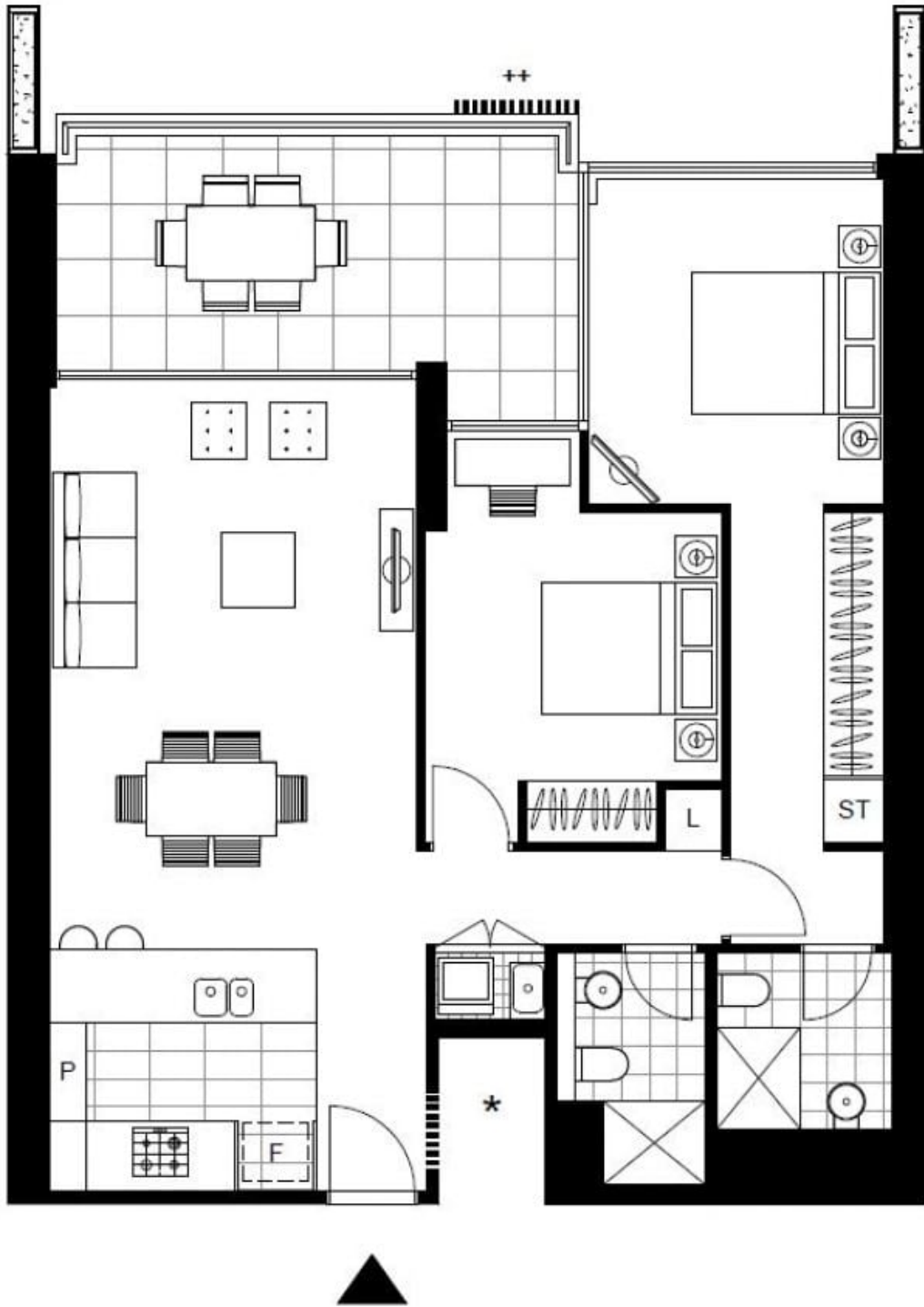
**Contact:** Naz Sabzpouri  
02 8588 8888  
0401 545 440

**Type:** Apartment

**Date Available:** 16/05/2023

**Bond:** \$3800

<https://www.resbymirvac.com>



Plans shown are only indicative of layout. Dimensions are approximate.

**Glebe, NSW**  
602/1 Cullen Close