



Glebe, NSW

216/1 Scotsman Street

1
BED

1
BATH



Modern 1-Bedroom Apartment in Mirvac's Harold Park

Welcome to Harold Park, Glebe's Secret Backyard.

Here in Harold Park you will find yourself in an idyllic parkside location, with only a short walk to Glebe Foreshore. Just meters away, The Tramsheds retail precinct resides featuring cafes, a grocery store, restaurants and a medical centre.

This 2nd floor 1-Bedroom Apartment features:

- Large bedroom with floor to ceiling built-in wardrobes
- Open-plan living and dining area flowing onto balcony
- Modern kitchen with stone benchtop and built in Miele appliances
- Sleek bathroom with plenty of storage

Deposit Taken

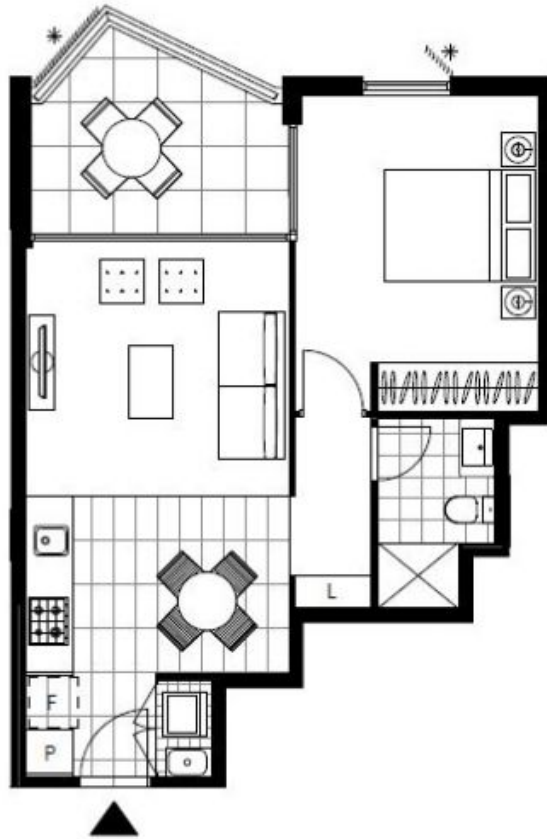
Contact: Naz Sabzpour
02 8588 8888
0401 545 440

Type: Apartment

Date Available: 18/05/2023

Bond: \$3000

<https://www.resbymirvac.com>



LEVEL 2

Plans shown are only indicative of layout. Dimensions are approximate.

Glebe, NSW
216/1 Scotsman Street