



Glebe, NSW
503/2 Scotsman Street

1
BED

1
BATH



Oversized 1 Bedroom Apartment with Private Outlook in Mirvac's Harold Park

Welcome to Harold Park, Glebe's Secret Backyard.

Here in Harold Park you will find yourself in an idyllic parkside location, with only a short walk to Glebe Foreshore. Just meters away, The Tramsheds retail precinct resides featuring cafes, a grocery store, restaurants and a medical centre.

This 68sqm, 1 bedroom apartment features:

- Spacious bedroom with generous floor-to-ceiling built-in wardrobes
- Open-plan living and dining area, with access to large balcony
- Modern kitchen with stone benchtop and built-in Miele appliances

Deposit Taken

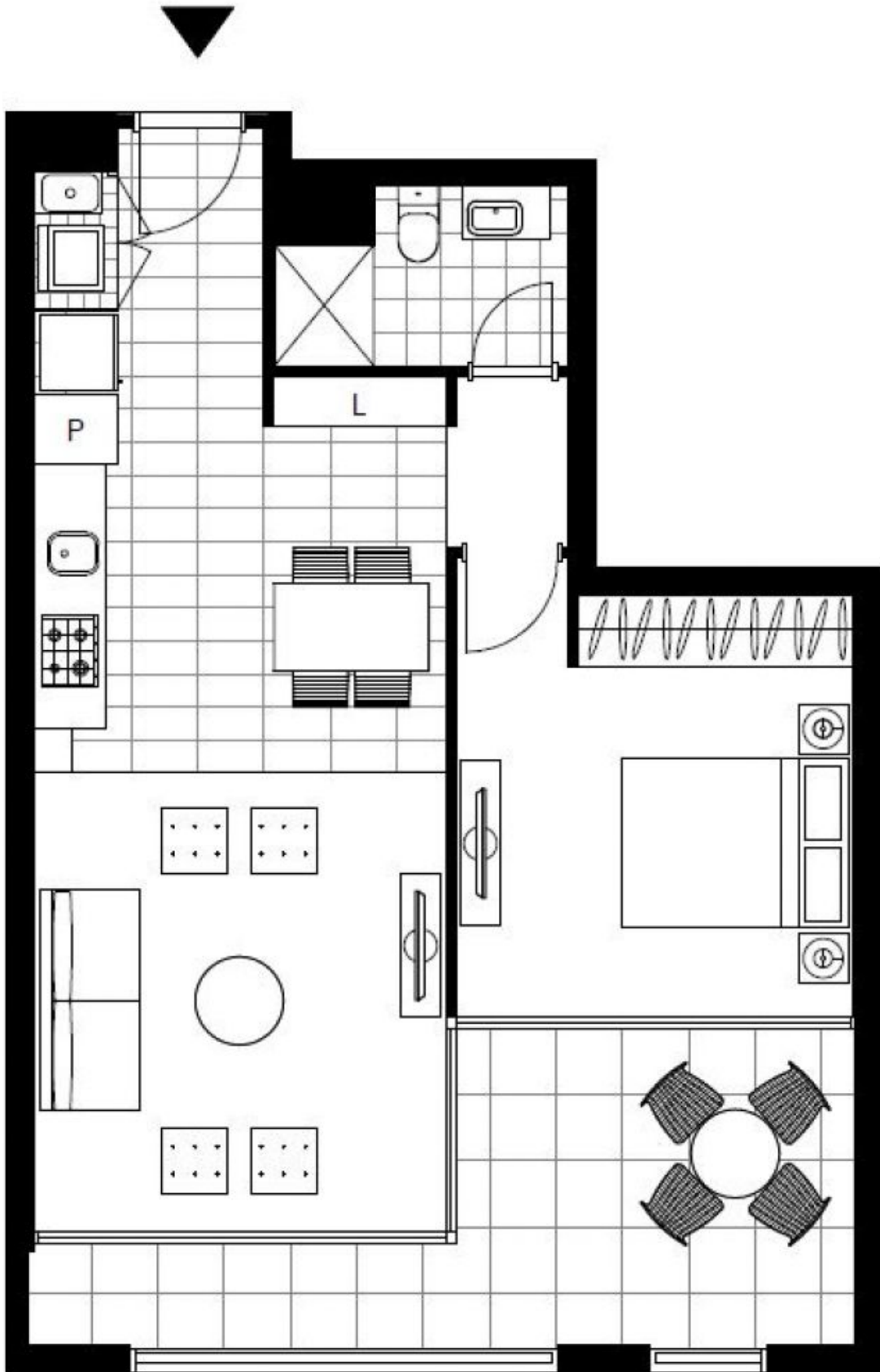
Contact: Naz Sabzpouri
02 8588 8888
0401 545 440

Type: Apartment

Date Available: 12/06/2023

Bond: \$2780

<https://www.resbymirvac.com>



Plans shown are only indicative of layout. Dimensions are approximate.

Glebe, NSW
503/2 Scotsman Street