



**Glebe, NSW**  
810/172 Ross Street

**1**  
BED

**1**  
BATH



### Top Floor one bedroom plus study apartment in Harold Park

Welcome to Harold Park, Glebe's Secret Backyard.

Here in Harold Park you will find yourself in an idyllic parkside location, with only a short walk to Glebe Foreshore. Just meters away, The Tramsheds retail precinct resides featuring cafes, a grocery store, restaurants and a medical centre.

This Top floor apartment features:

- Well-appointed bedroom with built in wardrobes
- Seperate Study, ideal for a home office setup
- Sunny open-plan living and dining area with skylight

### Deposit Taken

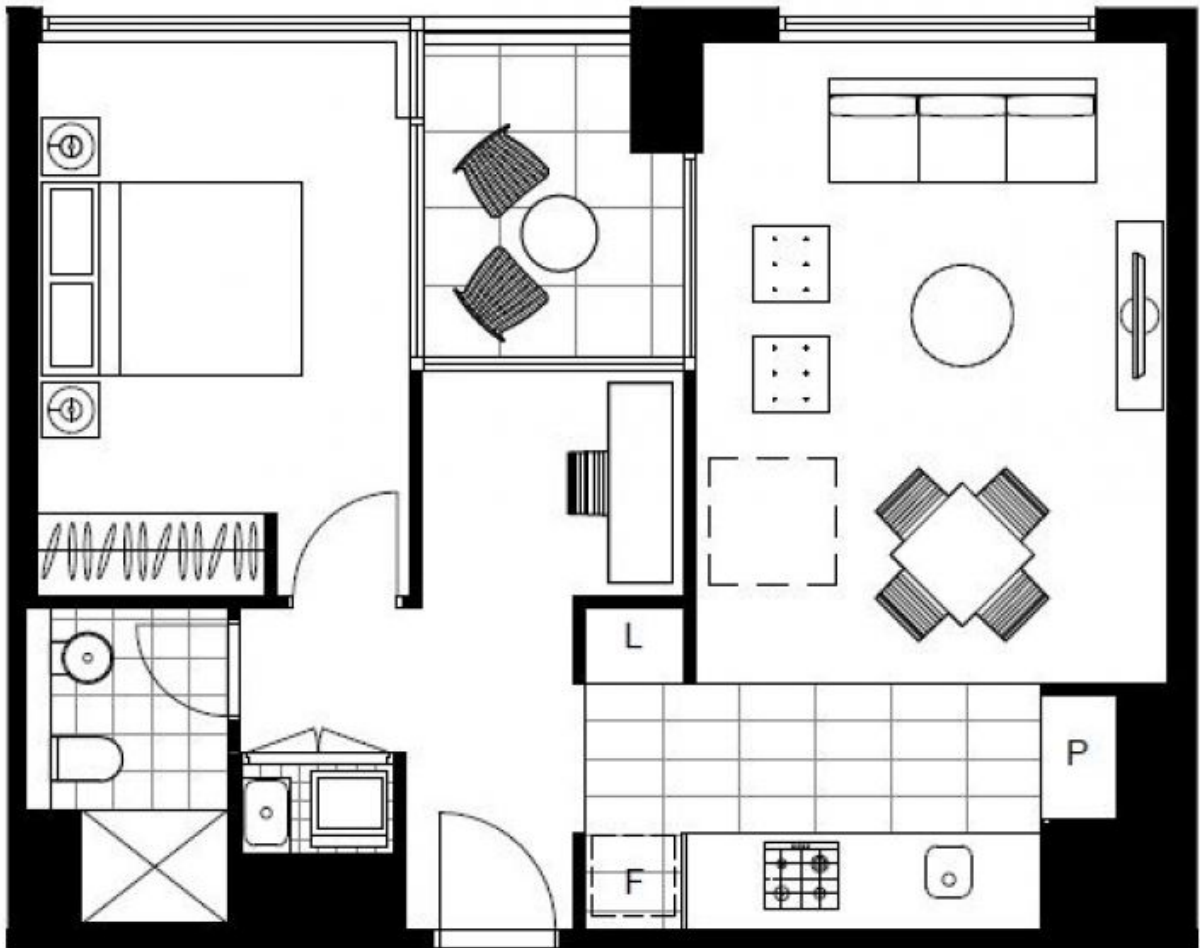
**Contact:** Naz Sabzpour  
02 8588 8888  
0401 545 440

**Type:** Apartment

**Date Available:** 05/06/2023

**Bond:** \$2880

**<https://www.resbymirvac.com>**



Plans shown are only indicative of layout. Dimensions are approximate.

**Glebe, NSW**  
810/172 Ross Street