

## Glebe, NSW

411/159 Ross Street

**1**  
BED

**1**  
BATH



### Modern 1-Bedroom Apartment in Harold Park

Welcome to Harold Park, Glebe's Secret Backyard.

Here in Harold Park you will find yourself in an idyllic parkside location, with only a short walk to Glebe Foreshore. Just meters away, The Tramsheds retail precinct resides featuring cafes, a grocery store, restaurants and a medical centre.

This stunning 4th floor unit features:

- Spacious bedroom with built in wardrobes
- Tiled living and dining area, leading to the balcony
- Modern kitchen with stone benchtop and Miele appliances
- Large balcony, perfect for entertaining

### DEPOSIT TAKEN

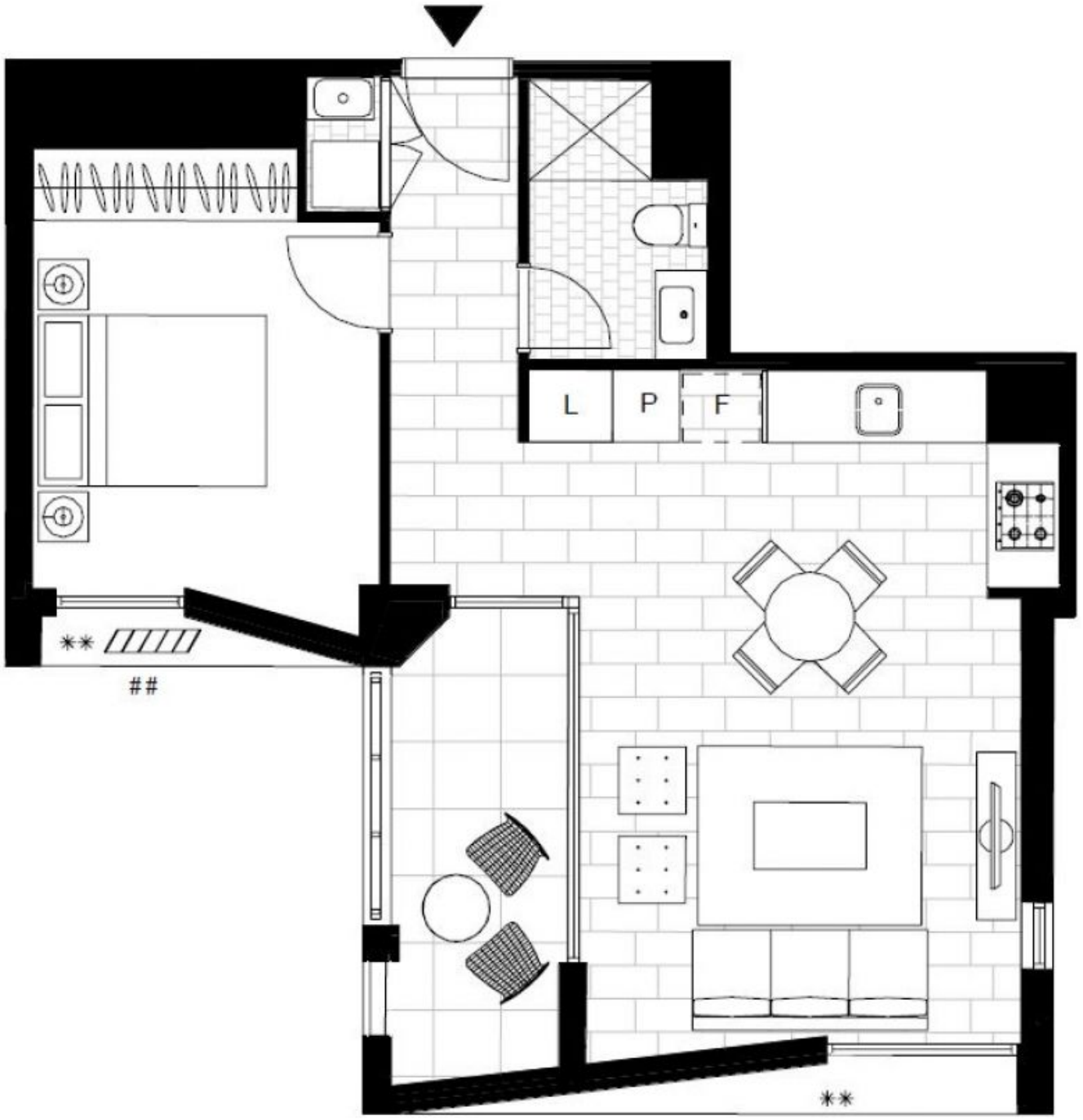
**Contact:** Naz Sabzpouri  
02 8588 8888  
0401 545 440

**Type:** Apartment

**Date Available:** 03/05/2023

**Bond:** \$2720

<https://www.resbymirvac.com>



Plans shown are only indicative of layout. Dimensions are approximate.

**Glebe, NSW**  
411/159 Ross Street