

Glebe, NSW

411/159 Ross Street

1
BED

1
BATH



Modern 1-Bedroom Apartment in Harold Park

Welcome to Harold Park, Glebe's Secret Backyard.

Here in Harold Park you will find yourself in an idyllic parkside location, with only a short walk to Glebe Foreshore. Just meters away, The Tramsheds retail precinct resides featuring cafes, a grocery store, restaurants and a medical centre.

This stunning 4th floor unit features:

- Spacious bedroom with built in wardrobes
- Tiled living and dining area, leading to the balcony
- Modern kitchen with stone benchtop and Miele appliances
- Large balcony, perfect for entertaining

DEPOSIT TAKEN

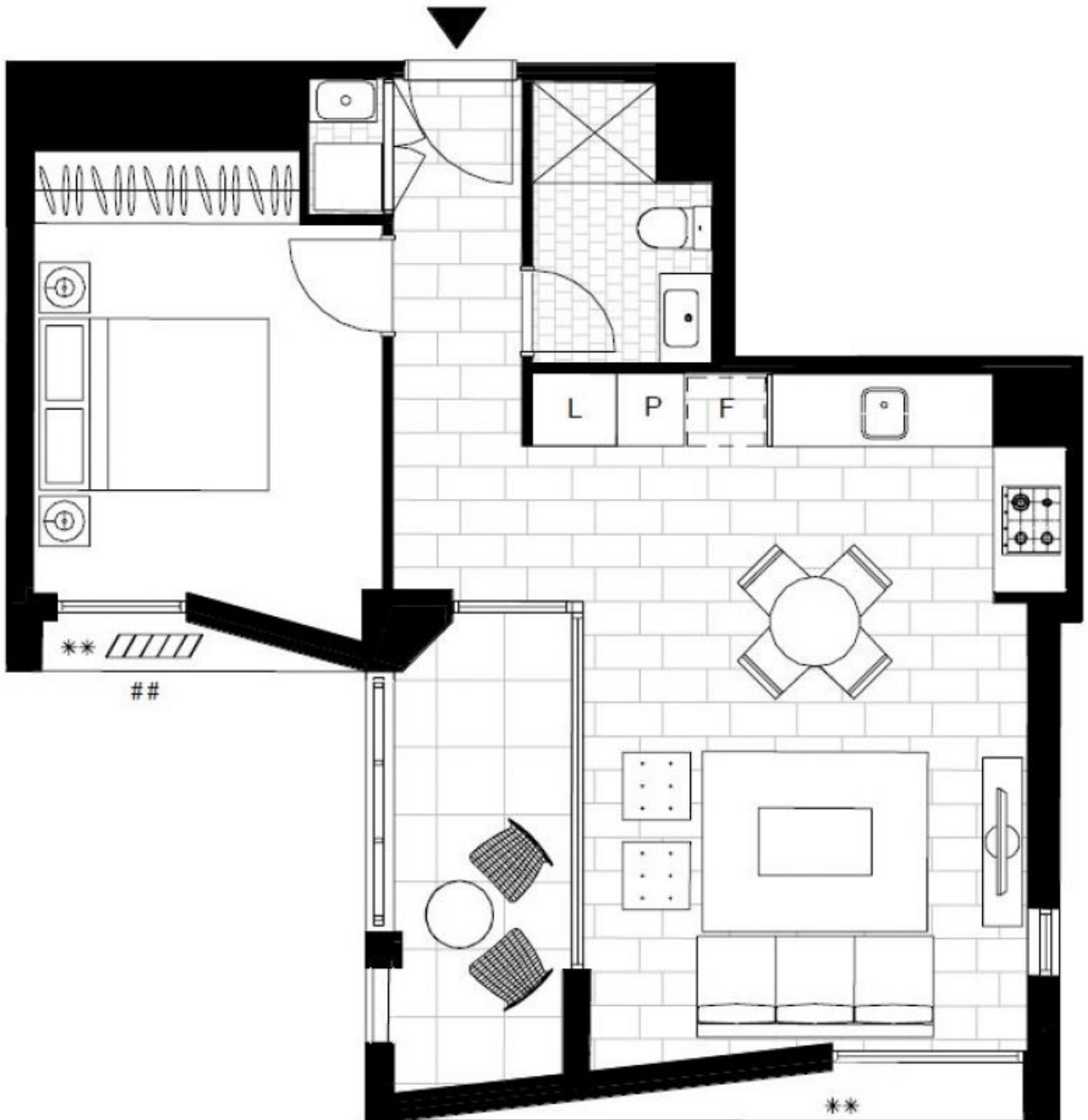
Contact: Naz Sabzpouri
02 8588 8888
0401 545 440

Type: Apartment

Date Available: 03/05/2023

Bond: \$2720

<https://www.resbymirvac.com>



Plans shown are only indicative of layout. Dimensions are approximate.

Glebe, NSW
411/159 Ross Street