



Glebe, NSW

510/1 Cullen Close

1
BED

1
BATH



Spacious & Bright One Bedroom apartment in Harold Park

Welcome to Harold Park, Glebe's Secret Backyard.

Here in Harold Park you will find yourself in an idyllic parkside location, with only a short walk to Glebe Foreshore. Just meters away, The Tramsheds retail precinct resides featuring cafes, a grocery store, restaurants and a medical centre.

This 67sqm, 5th floor apartment features:

- Generous bedroom with built-in wardrobes
- Open-plan living and dining area flowing to spacious balcony
- Contemporary kitchen with stone island benchtop and Miele appliances

\$740 per week | Deposit Taken!

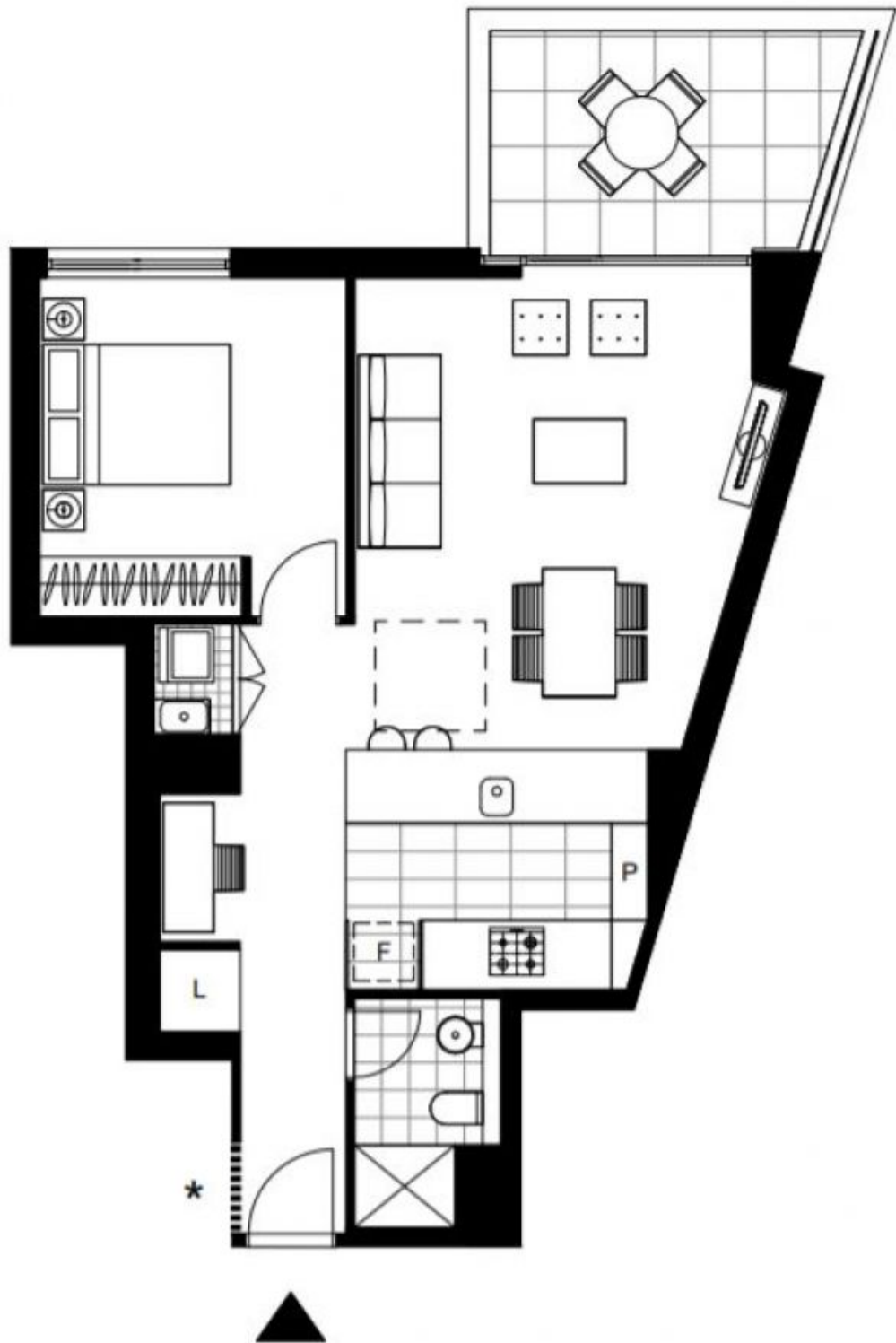
Contact: Naz Sabzpouri
02 8588 8888
0401 545 440

Type: Apartment

Date Available: 03/05/2023

Bond: \$2960

<https://www.resbymirvac.com>



Plans shown are only indicative of layout. Dimensions are approximate.

Glebe, NSW
510/1 Cullen Close