



**Docklands, VIC**  
1407/50 Lorimer Street

**1** BED   **1** BATH   **1** CAR



**Yearn for This Memorable Yarra's Edge Oasis**

With a large balcony that is approximately 20 sqm offers panoramic views overlooking the Yarra River, Port Phillip Bay and the CBD, how could you resist this stunning one bedroom apartment at Yarra's Edge.

During the day this wonderful apartment is bathed in natural sunlight and by night you will be mesmerized by the magnificent CBD backdrop.

The full sized open living area will suit the entertainer in you and if you love to cook, the gourmet kitchen includes a symphony of quality appliances with stone bench tops.

The main bedroom overlooks the CBD backdrop and offers built in robes and balcony access.

**Contact Agent**

**Contact:** Andrew Chen  
03 9645 1199  
0490 816 861  
Joe Qiao  
03 9645 1199  
0408 288 542

**Type:** Apartment

**Sold Date:** 23/10/2023

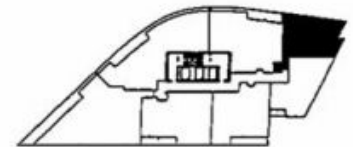
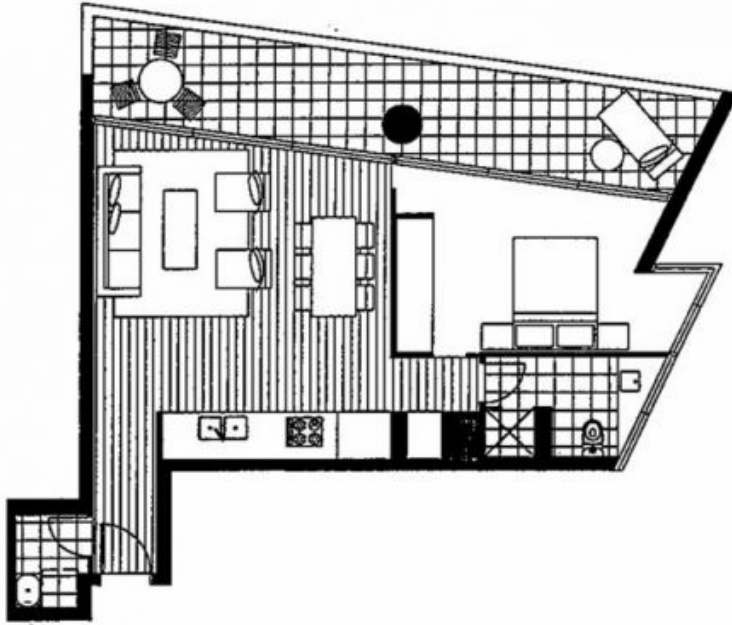
**<https://www.resbymirvac.com>**

Living  
Dining

4.1 x 3.4  
3.6 x 2.0

Bedroom 1 3.1 x 3.7 Plus Robe

Please note that this floor plan is a guide only.  
The information contained herein is not guaranteed.  
Dimensions are approximate. Prospect purchasers  
must rely on their own enquiries.



Plans shown are only indicative of layout. Dimensions are approximate.

**Docklands, VIC**  
1407/50 Lorimer Street