



## Docklands, VIC

2204/70 Lorimer Street

**2** **2** **2**   
BED BATH CAR

### WOW! Check out these dazzling views of Melbourne's skyline

Welcome to Yarra's Edge, Docklands' most prestigious riverside community.

An perfectly positioned waterfront location, only moments away from an array of cafes, restaurants, parks, Yarra's Edge promenade and IGA supermarket. Residents may also enjoy access to Mirvac's state of the art Rek Dek facilities at the base of Tower 1; comprising of a 25M lap pool, spa, sauna and gymnasium.

This expansive 2Bedroom apartment features;  
Oversized waterfront bedrooms with built-in wardrobes  
Functional living and dining area, with access to balcony/ideal for entertaining

### BREAK LEASE | \$840pw

**Contact:** Aleiasha Clark  
03 9645 1199  
0491 174 507  
Anthony Yau  
0396451199  
0408 527 174

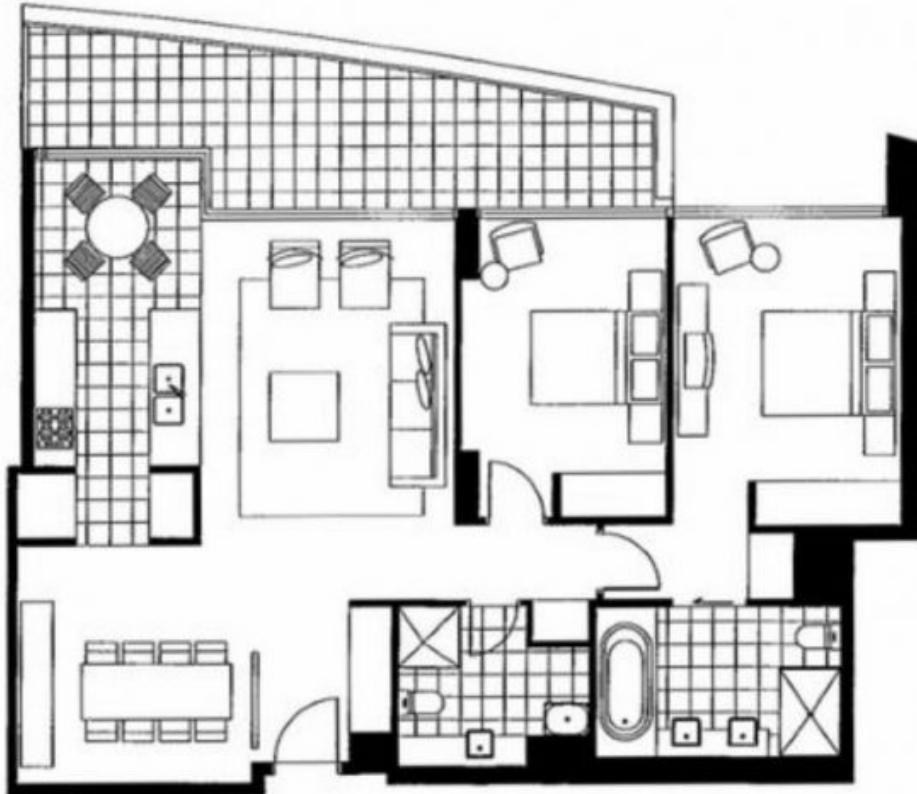
**Type:** Apartment  
**Date Available:** 21/04/2023  
**<https://www.resbymirvac.com>**



2

2

2



## LEVEL 22

Please note that this floor plan is a guide only.  
The information contained herein is not  
guaranteed. Dimensions are approximate.  
Prospective purchasers must rely on their own  
enquiries.



real estate  
services  
by mirvac

# 2204/70 Lorimer St

# DOCKLANDS

Plans shown are only indicative of layout. Dimensions are approximate.

**Docklands, VIC**  
2204/70 Lorimer Street