



**Glebe, NSW**  
103/159 Ross Street

**2** **2** **1** **RES**  
BED BATH CAR

**Sunny Park Facing 2 Bedroom Apartment in Mirvac's Harold Park**

Welcome to Harold Park, Glebe's Secret Backyard.

Here in Harold Park you will find yourself in an idyllic parkside location, with only a short walk to Glebe Foreshore. Just meters away, The Tramsheds retail precinct resides featuring cafes, a grocery store, restaurants and a medical centre.

This 2-bedroom ground floor apartment features:

- Large bedrooms with generous floor-to-ceiling built-in wardrobes
- Open-plan living and dining area, with access to courtyard perfect for entertaining

**\$1,150 per week | Park Facing!**

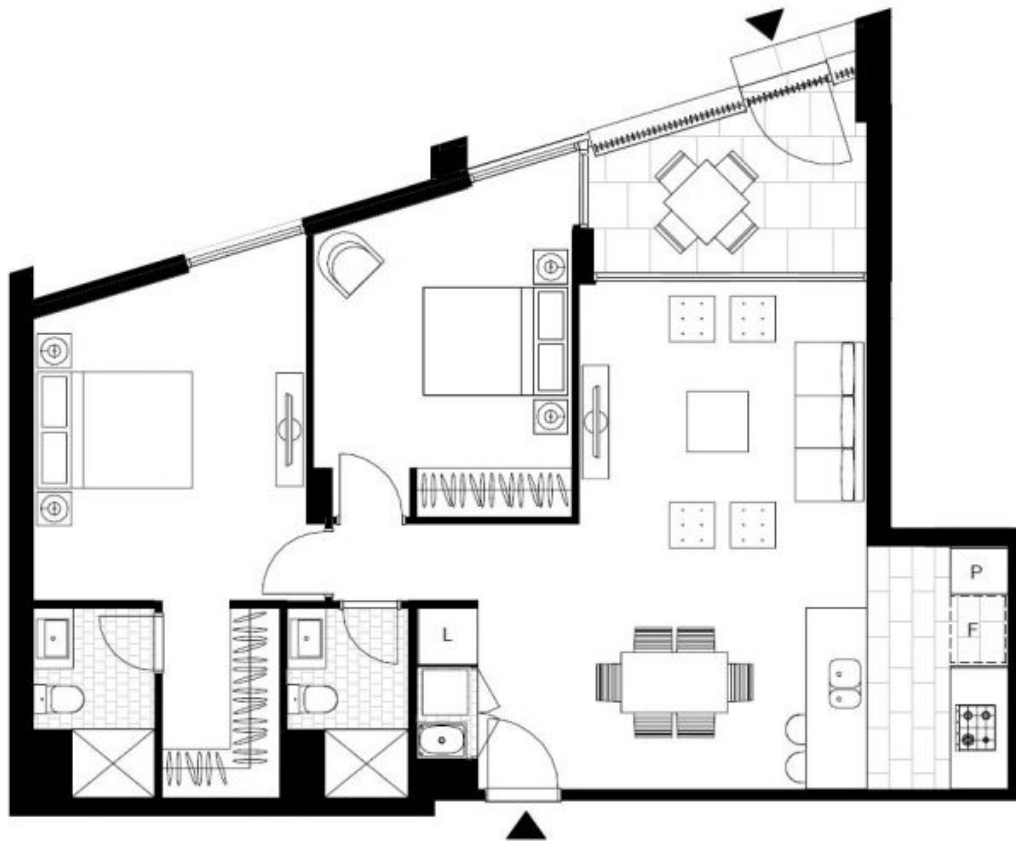
**Contact:** Naz Sabzpouri  
02 8588 8888  
0401 545 440

**Type:** Apartment

**Date Available:** 03/04/2023

**Bond:** \$4800

<https://www.resbymirvac.com>



LEVEL 1

Plans shown are only indicative of layout. Dimensions are approximate.

**Glebe, NSW**  
103/159 Ross Street