



## Glebe, NSW

503/2 Cullen Close

**1**  
BED

**1**  
BATH



### 1 Bedroom Apartment with Spacious Balcony in Mirvac's Harold Park

Welcome to Harold Park, Glebe's Secret Backyard.

Here in Harold Park you will find yourself in an idyllic parkside location, with only a short walk to Glebe Foreshore. Just meters away, The Tramsheds retail precinct resides featuring cafes, a grocery store, restaurants and a medical centre.

This 62sqm, 5th floor apartment features:

- Large bedroom with floor to ceiling built-in wardrobe
- Tiled, open-plan living and dining area
- Modern kitchen with stone benchtop and Miele appliances

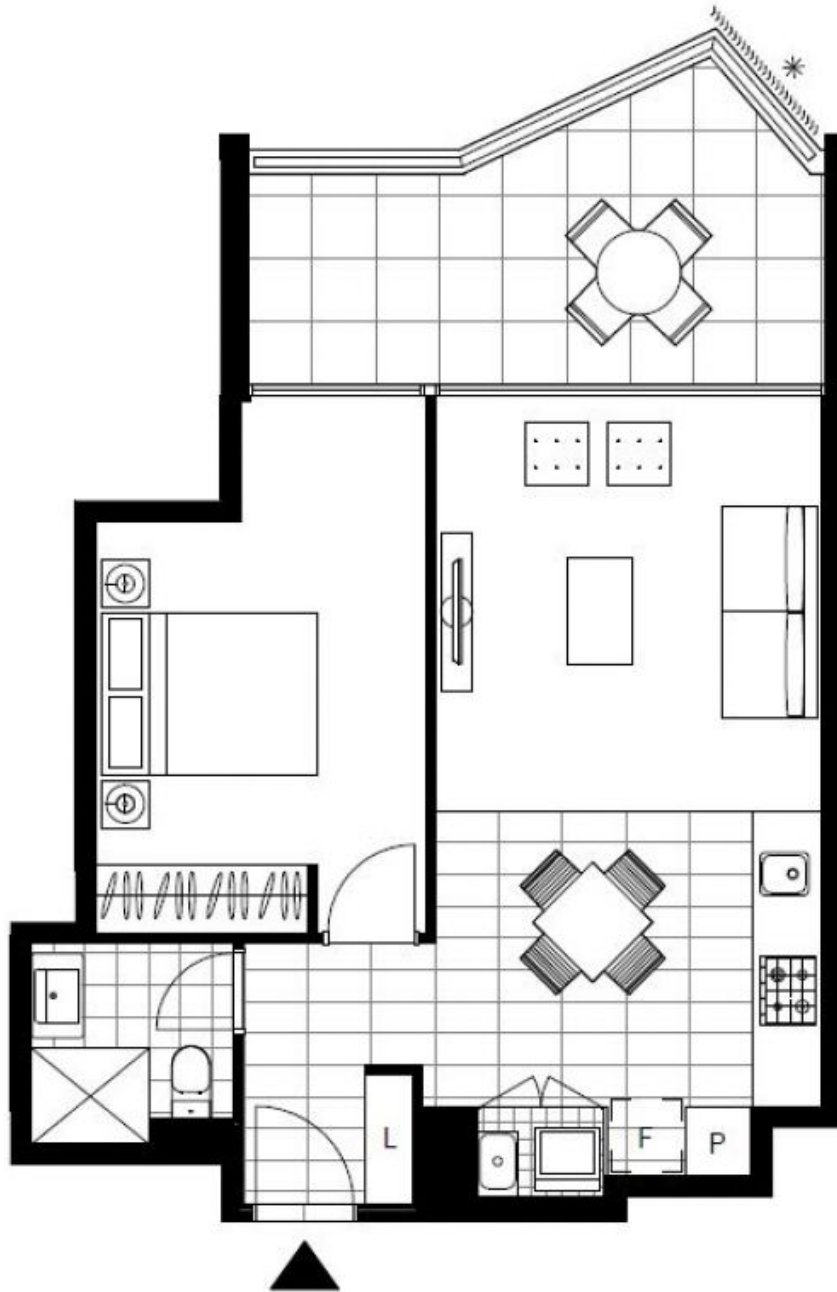
**Deposit Taken | \$780 per week**

**Contact:** Naz Sabzpouri  
02 8588 8888  
0401 545 440

**Type:** Apartment

**Date Available:** 28/04/2023

**<https://www.resbymirvac.com>**



Plans shown are only indicative of layout. Dimensions are approximate.

**Glebe, NSW**  
503/2 Cullen Close