



Docklands, VIC

1406/100 Lorimer Street

2
BED

1
BATH

1
CAR



SOLD off the market

Welcome to Yarra's Edge 'Array' Tower,

Once of the most coveted buildings within the esteemed Yarra's Edge precinct, 'Array' offers exemplary living with a stylish foyer and concierge service to the state of the art communal facilities.

This modern 2 Bedroom, 1 Bathroom, 1 Car Space apartment features;
Open plan living and dining space with tiles throughout
Floor to ceiling windows throughout
BIR to both bedrooms
Central main bathroom with chic fixtures
Intercom entrance
Array Tower Concierge service*

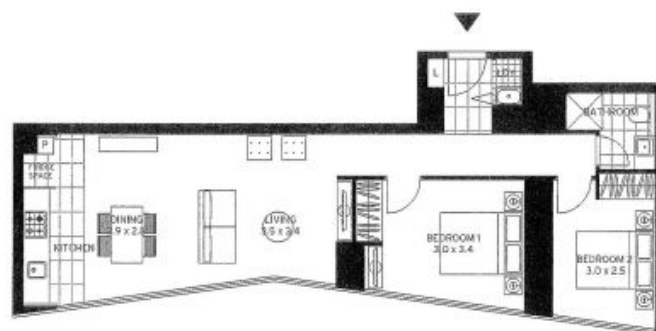
Contact Agent

Contact: Andrew Chen
03 9645 1199
0490 816 861
Andrew Chen
03 9645 1199
0490 816 861

Type: Apartment

Sold Date: 22/03/2023

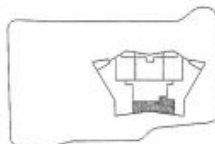
<https://www.resbymirvac.com>



LEVEL 7,8,9,10,11,12,13,14,15,16,17,18,19,20

APT 7.06
APT 8.06
APT 9.06
APT 10.06
APT 11.06
APT 12.06
APT 13.06
APT 14.06
APT 15.06
APT 16.06
APT 17.06
APT 18.06
APT 19.06
APT 20.06

LOCATION PLAN



Level 7 shown



TOWER 2 BEDROOM

Internal Area 74 m²
Balcony Area 0 m²
Total Area 74 m²

Areas related to fixed services, area includes kitchen and/or service area
Excludes parking and other non-carriage areas



Please note that this floor plan is a guide only and may be amended prior to completion. The information contained herein is intended for use in connection with the sale of the property and does not constitute an offer of any financial product. The information is provided for general information only and should not be relied upon for any specific purpose. The information is provided for general information only and should not be relied upon for any specific purpose. The information is provided for general information only and should not be relied upon for any specific purpose.

For further enquiries
call 03 9645 9400 or visit
arrebymirvac.com



Plans shown are only indicative of layout. Dimensions are approximate.

Docklands, VIC
1406/100 Lorimer Street