



## Docklands, VIC

1406/100 Lorimer Street

**2** BED **1** BATH **1** CAR 

### SOLD off the market

Welcome to Yarra's Edge 'Array' Tower,

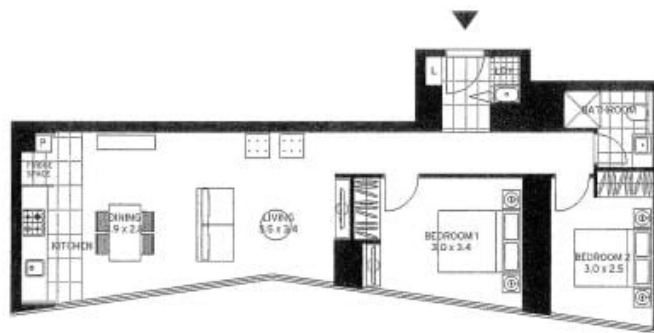
Once of the most coveted buildings within the esteemed Yarra's Edge precinct, 'Array' offers exemplary living with a stylish foyer and concierge service to the state of the art communal facilities.

This modern 2 Bedroom, 1 Bathroom, 1 Car Space apartment features;  
Open plan living and dining space with tiles throughout  
Floor to ceiling windows throughout  
BIR to both bedrooms  
Central main bathroom with chic fixtures  
Intercom entrance  
Array Tower Concierge service\*

### Contact Agent

**Contact:** Andrew Chen  
03 9645 1199  
0490 816 861  
Andrew Chen  
03 9645 1199  
0490 816 861

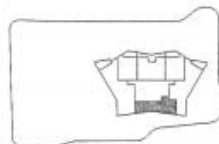
**Type:** Apartment  
**Sold Date:** 22/03/2023  
<https://www.resbymirvac.com>



LEVEL 7,8,9,10,11,12,13,14,15,16,17,18,19,20

- APT 7.06
- APT 8.06
- APT 9.06
- APT 10.06
- APT 11.06
- APT 12.06
- APT 13.06
- APT 14.06
- APT 15.06
- APT 16.06
- APT 17.06
- APT 18.06
- APT 19.06
- APT 20.06

LOCATION PLAN



Level 7 shown



TOWER  
2 BEDROOM

Internal Area	74 m <sup>2</sup>
Balcony Area	0 m <sup>2</sup>
Total Area	74 m <sup>2</sup>

Areas subject to final survey, area includes balconies and/or terrace areas, excludes carport and other non-covered areas.



Please note that this floor plan is a guide only and may be subject to change prior to completion. The information contained herein is intended for general information only and does not constitute an offer of any financial product or service. It is not intended to be relied upon as a basis for investment decisions. The information is provided for general information only and is not intended to be relied upon as a basis for investment decisions. The information is provided for general information only and is not intended to be relied upon as a basis for investment decisions.

For further enquiries call 03 9645 9400 or visit [arreybymirvac.com](http://arreybymirvac.com)



Plans shown are only indicative of layout. Dimensions are approximate.