



Docklands, VIC

2403/80 Lorimer Street

2 BED **2** BATH **2** CAR 

Looking for a change of lifestyle?

Welcome to Yarra's Edge's Tower 4.

Positioned in the heart of the prestigious Yarra's Edge precinct 'Tower 4' offers its residents access to the state of the art RekDek facilities comprising of pool, spa, gymnasium and sauna.

This stylish 2 Bedroom, 2Bathroom, 2 Car Space apartment features;
Renovated interior with sleek cabinetry
Spacious living and dining experience opening to riverfront balcony
Master suite with huge robe and ensuite
Electric blinds to living area
Separate laundry

\$830 per week

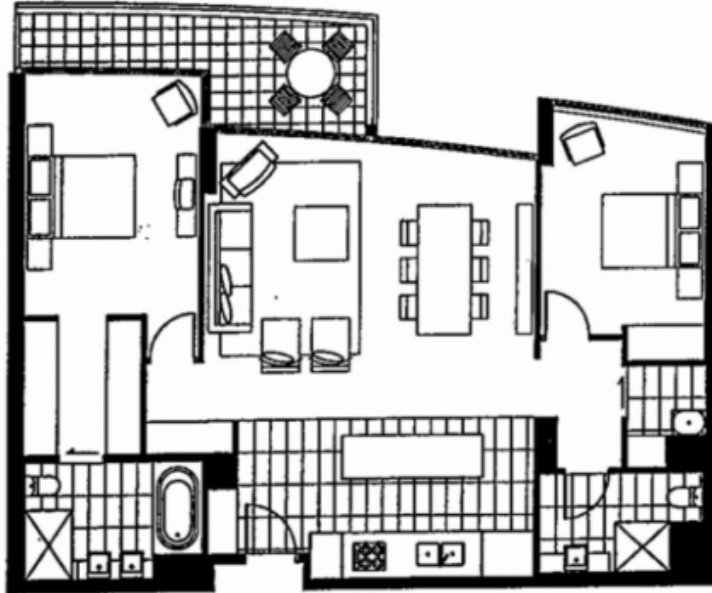
Contact: Anthony Yau
0396451199
0408 527 174
Aleisha Clark
03 9645 1199
0491 174 507

Type: Apartment

Date Available: 14/04/2023
<https://www.resbymirvac.com>

Living	3.7 x 4.1	Bedroom 1	3.2 x 4.4	Plus Robe
Dining	2.4 x 3.6	Bedroom 2	3.0 x 3.7	Plus Robe

Please note that this floor plan is a guide only.
The information contained herein is not guaranteed.
Dimensions are approximate. Prospect purchasers
must rely on their own enquiries.



Plans shown are only indicative of layout. Dimensions are approximate.

Docklands, VIC
2403/80 Lorimer Street