



Docklands, VIC
2204/80 Lorimer Street

3 BED **2** BATH **2** CAR 

Lap up this GRAND 2Bedroom apartment with impeccable views

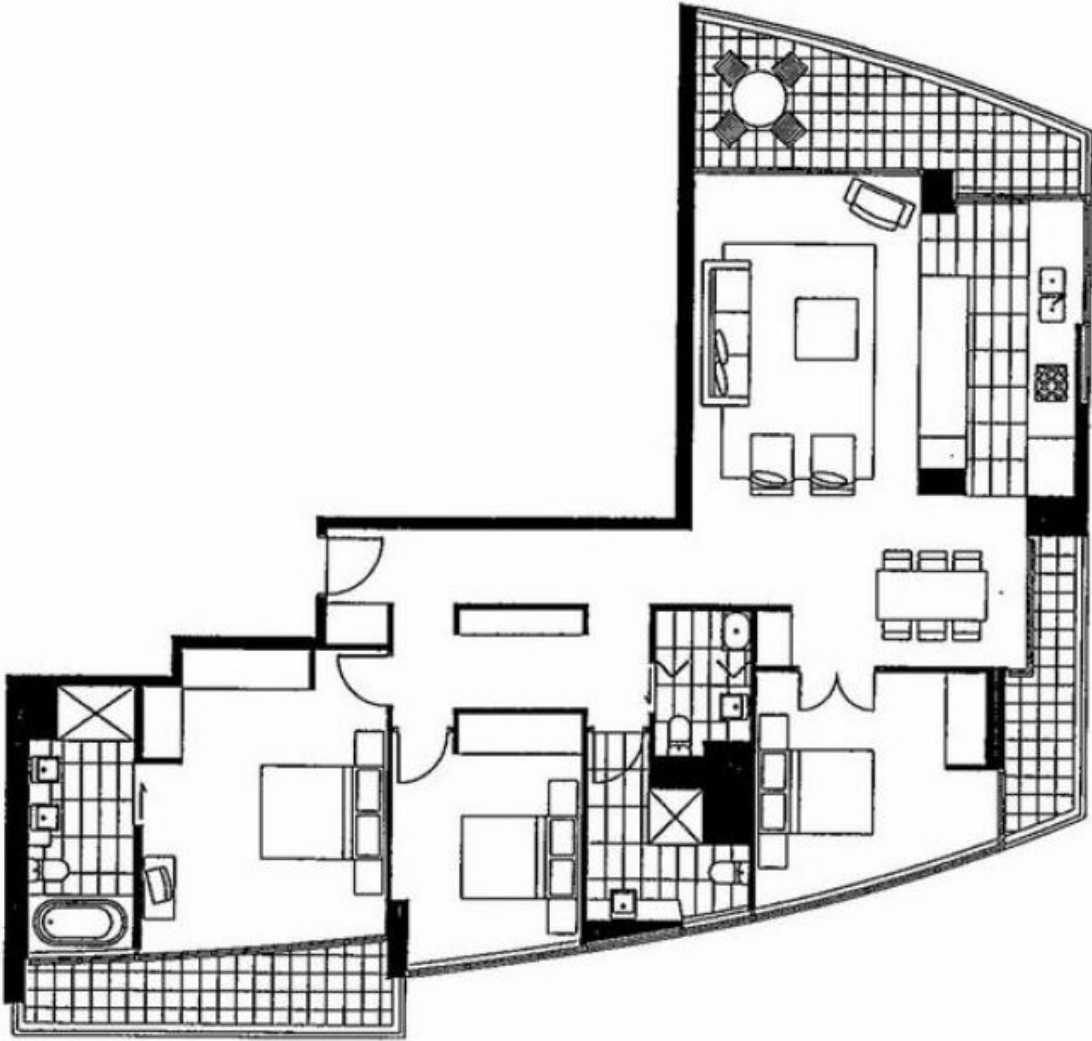
Be part of the exclusive Yarra's Edge community, surrounded by waterfront walkways, green spaces, and elegant shopping, dining and entertainment. Residents may also enjoy access to Mirvac's state of the art Rek Dek facilities at the base of Tower 1; comprising of a 25M lap pool, spa, sauna and gymnasium.

This HUGE 3Bedroom apartment features;
Panoramic vistas of Port Phillip Bay, CBD & Yarra's Edge marina
BRAND NEW carpet and paint throughout the home
Multi purpose space could be a study, 2nd living space or 3Bedroom
Functional living and dining area, with access to balcony
Contemporary kitchen with stone benchtops & European appliances

Contact Anthony!

Contact: Anthony Yau
0396451199
0408 527 174
Aleisha Clark
03 9645 1199
0491 174 507

Type: Apartment
Date Available: 27/03/2023
<https://www.resbymirvac.com>



Plans shown are only indicative of layout. Dimensions are approximate.

Docklands, VIC
2204/80 Lorimer Street