



Glebe, NSW

706/148 Ross Street

1
BED

1
BATH



Premium & Modern, 1-Bedroom Apartment in Harold Park, Glebe

Welcome to Harold Park!

Here in Harold Park you will find yourself in an idyllic parkside location, with only a short walk to Glebe Foreshore. Just meters away, The Tramsheds retail precinct resides featuring cafes, a grocery store, restaurants and a medical centre.

This 84sqm, 7th floor Apartment features:

- Large bedroom with generous built-in wardrobe
- Contemporary kitchen with stone benchtop and Miele appliances
- Large wrap-around balcony, great for entertaining

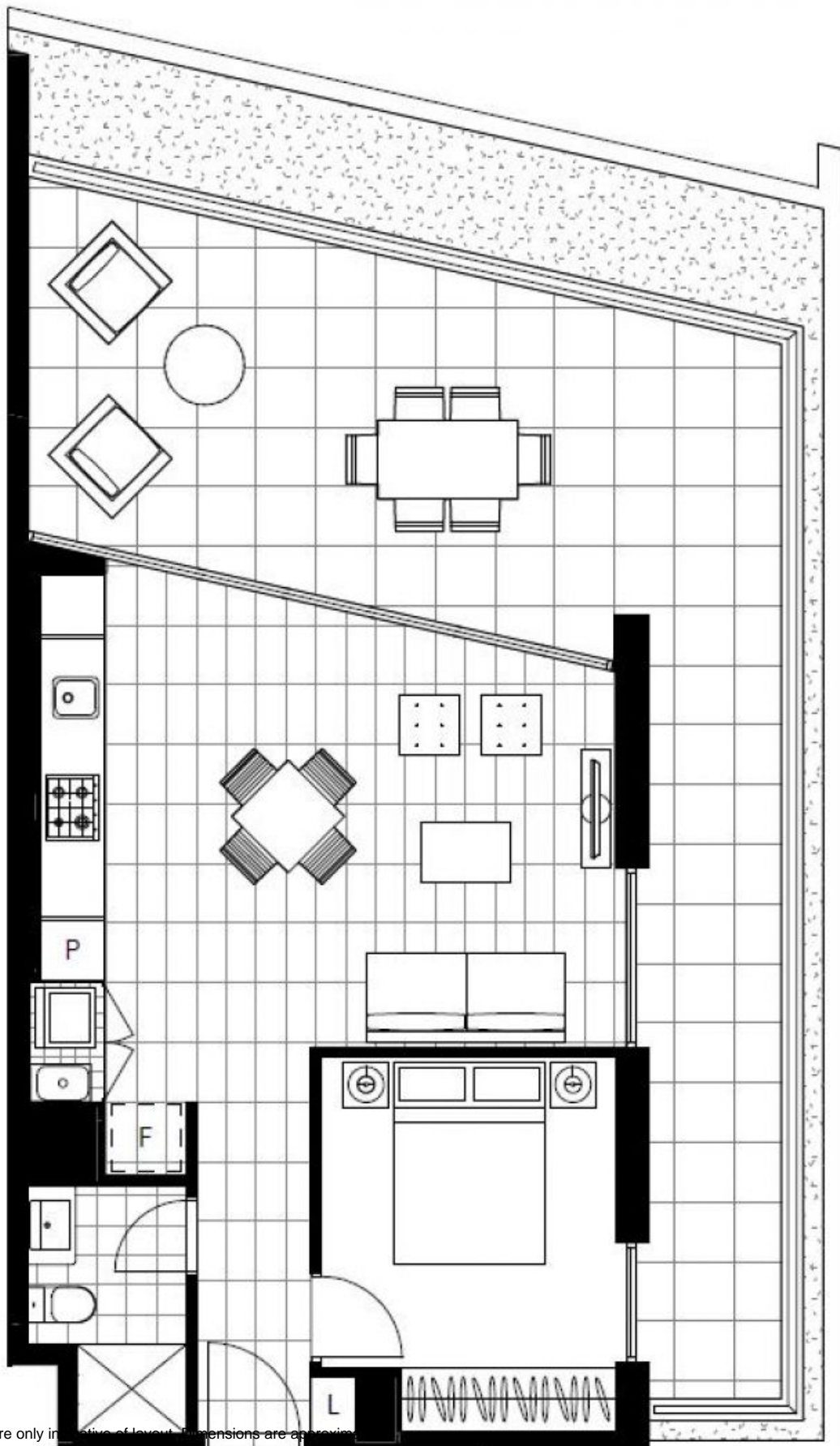
Deposit Taken

Contact: Naz Sabzpour
02 8588 8888
0401 545 440

Type: Apartment

Date Available: 20/04/2023

<https://www.resbymirvac.com>



Plans shown are only indicative of layout. Dimensions are approximate.

Glebe, NSW
706/148 Ross Street

LEVEL 7