

Glebe, NSW

705/122 Ross Street

3 BED **2** BATH **2** CAR 

Oversized 222sqm 3-Bedroom Apartment in Harold Park

Welcome to Harold Park!

Here in Harold Park you will find yourself in an idyllic parkside location, with only a short walk to Glebe Foreshore. Just meters away, The Tramsheds retail precinct resides featuring cafes, a grocery store, restaurants and a medical centre.

This over-sized 3-Bedroom apartment has to offer:

- Large bedrooms with floor to ceiling built-in wardrobes
- Open-plan living and dining area flowing onto balcony
- Modern kitchen with stone benchtops and Miele appliances

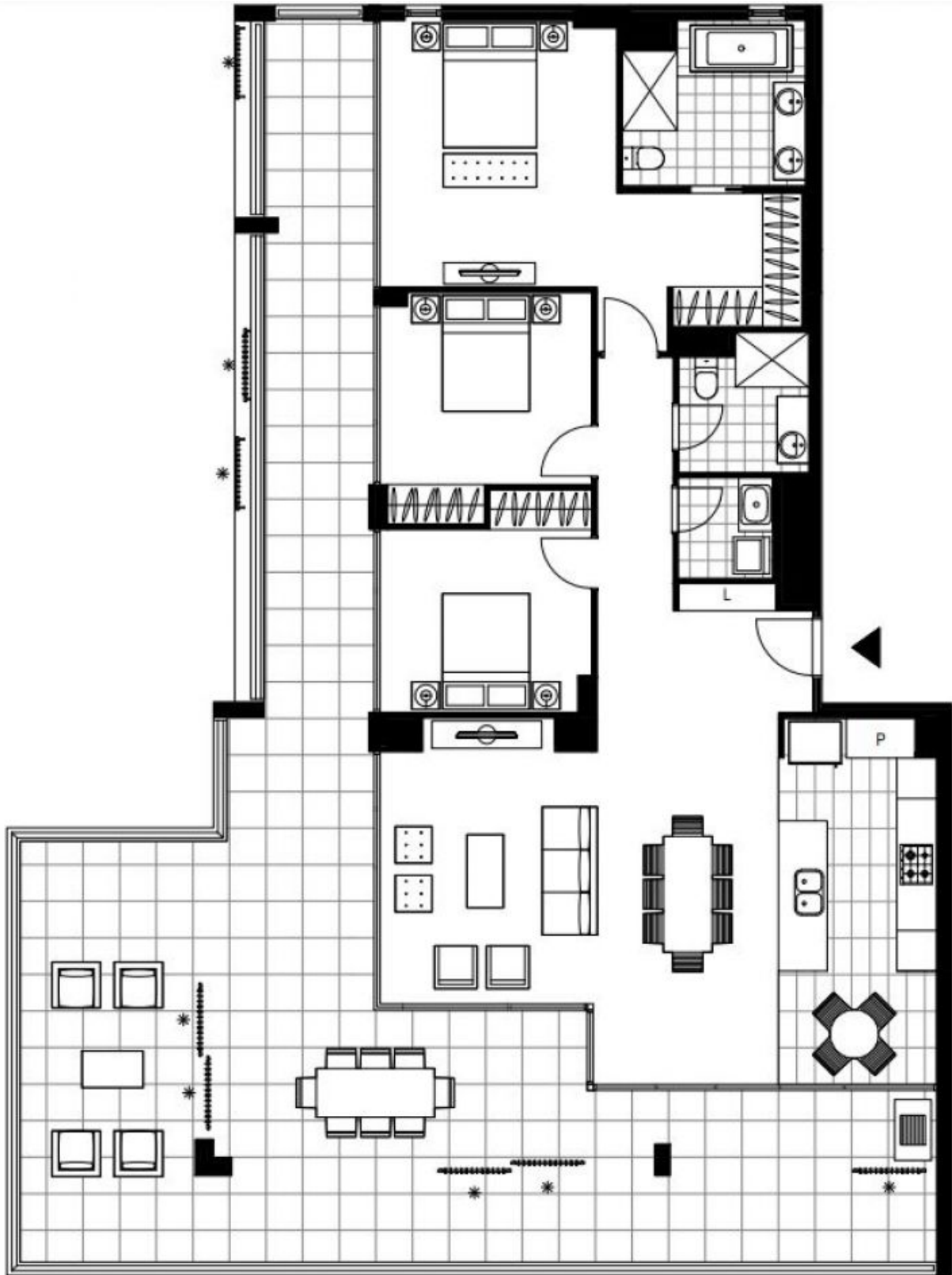
Deposit taken | \$1,650 per week

Contact: Naz Sabzpouri
02 8588 8888
0401 545 440

Type: Apartment

Date Available: 04/04/2023

<https://www.resbymirvac.com>



Plans shown are only indicative of layout. Dimensions are approximate.

Glebe, NSW
705/122 Ross Street