



Glebe, NSW

401/17 Grattan Close

2 BED **2** BATH **1** CAR 

North-East Facing 2 Bedroom with Parking Apartment

Welcome to Harold Park!

Here in Harold Park you will find yourself in an idyllic parkside location, with only a short walk to Glebe Foreshore. Just meters away, The Tramsheds retail precinct resides featuring cafes, a grocery store, restaurants and a medical centre.

This 4th floor Apartment features:

- Large bedrooms with generous built-in wardrobes
- Open-plan living and dining area, leading to the balcony
- Contemporary kitchen with stone benchtop and Miele appliances
- Ultramodern bathrooms with plenty of storage, bath in main

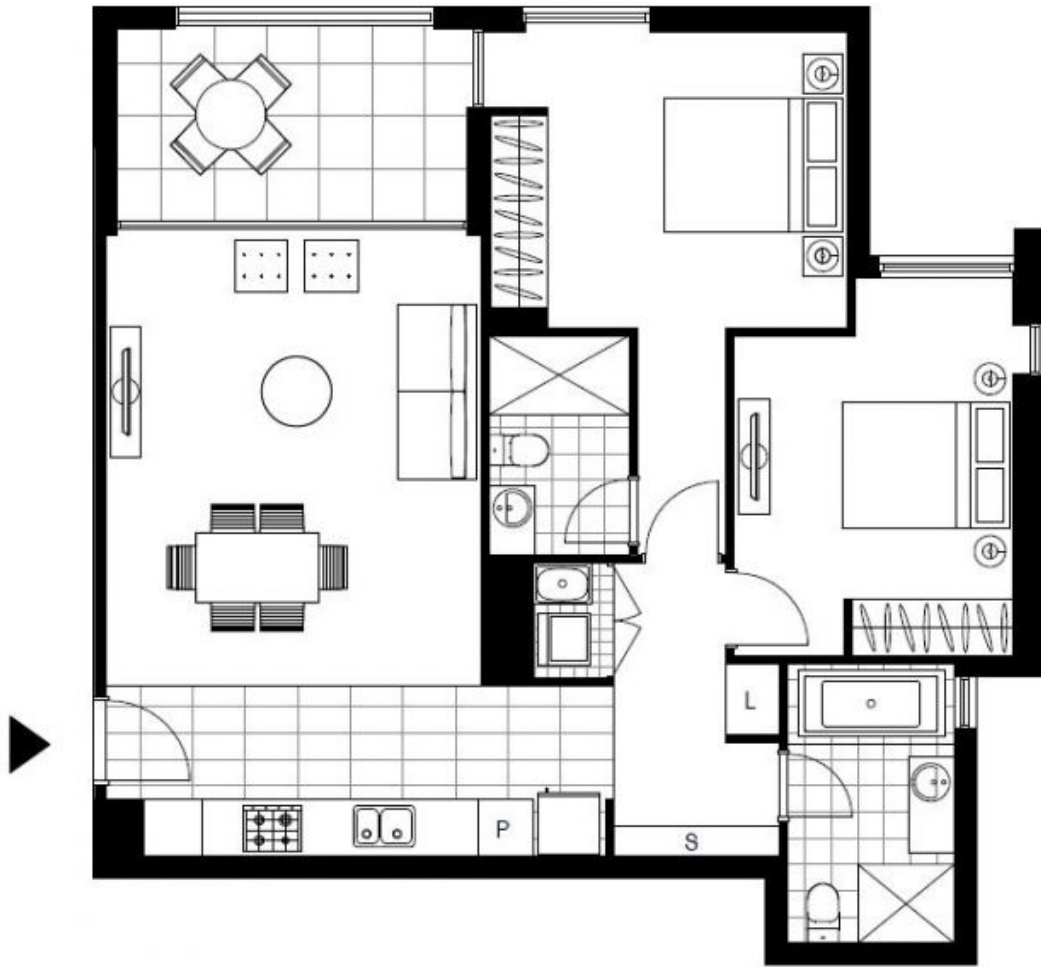
Deposit Taken | \$1050 per week

Contact: Naz Sabzpour
02 8588 8888
0401 545 440

Type: Apartment
Date Available: 06/04/2023

Bond: \$4600

<https://www.resbymirvac.com>



Plans shown are only indicative of layout. Dimensions are approximate.

Glebe, NSW
401/17 Grattan Close