



Glebe, NSW

401/5 Grattan Close

1
BED

1
BATH



Contemporary 1 Bedroom Apartment in 'Locarno', Harold Park

Welcome to Harold Park,

Here in Harold Park you will find yourself in an idyllic parkside location, with only a short walk to Glebe Foreshore. Just meters away, The Tramsheds retail precinct resides featuring cafes, a grocery store, restaurants and a medical centre.

This 4th floor apartment features:

- Spacious bedroom with built-in wardrobe
- Open-plan living and dining area flowing onto internal garden facing balcony

Deposit Taken | \$750 per week

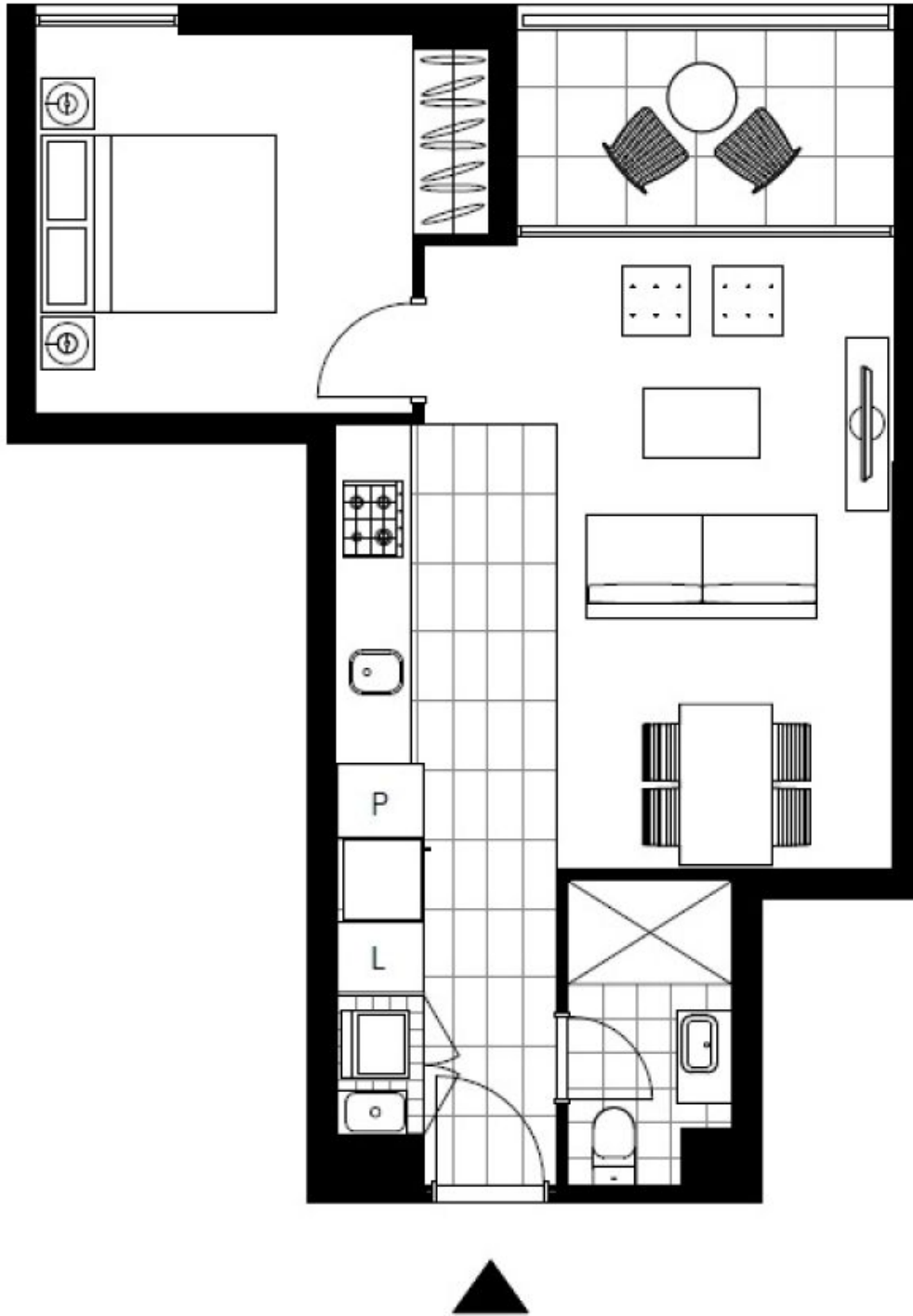
Contact: Naz Sabzpouri
02 8588 8888
0401 545 440

Type: Apartment

Date Available: 15/04/2023

Bond: \$3000

<https://www.resbymirvac.com>



Plans shown are only indicative of layout. Dimensions are approximate.

Glebe, NSW
401/5 Grattan Close