



Aintree, VIC

15 Ellson Street

2 BED **1** BATH **1** CAR



Stylish 2Bedroom townhouse in Woodlea estate

Welcome to 'Woodlea',

A community designed for modern and connected living, Woodlea already features and will continue to include more parklands, public spaces, play grounds, sporting grounds, community hubs and connectivity to the CBD thanks to adjacent Rockbank Station.

- This 2Bedroom townhome features;
- Expansive dining and living zone flowing to first floor balcony
- Floorboards throughout living zones
- Entertainers kitchen with large island bench
- European kitchen appliances
- Two spacious bedrooms with BIR

\$400 per week

Contact: Aleiasha Clark
03 9645 1199
0491 174 507

Type: Townhouse

Date Available: 31/03/2023

<https://www.resbymirvac.com>

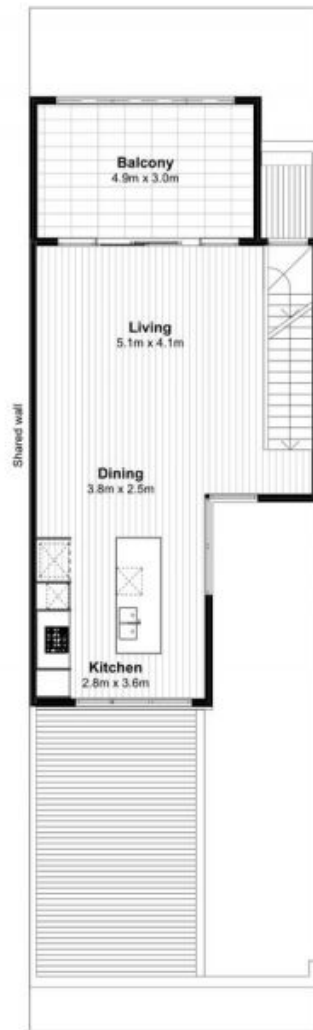
Lot 37116 - Type 46

Area Schedule

Land	149.5m ²
Total Living	122.7m ²
Carport	23.3m ²
Balcony	16.5m ²



Ground Floor
1:100



First Floor
1:100

