



## Docklands, VIC

1208/60 Lorimer Street

**1** BED **1** BATH **1** CAR



### Experience premier living in Yarra's Edge precinct

Welcome to Tower 2,

A perfectly positioned waterfront location, only moments away from an array of cafes, restaurants, parks, Yarra's Edge promenade and IGA supermarket.

This FURNISHED 1Bedroom apartment features;  
 Quality modern furnishings throughout including study  
 Floorboards to living space and bedroom  
 Spacious living and dining room flowing to balcony  
 Large bedroom with WIR  
 European laundry  
 Ducted heating and air conditioning

**\$675 per week**

**Contact:** Aleiasha Clark  
 03 9645 1199  
 0491 174 507  
 Anthony Yau  
 0396451199  
 0408 527 174

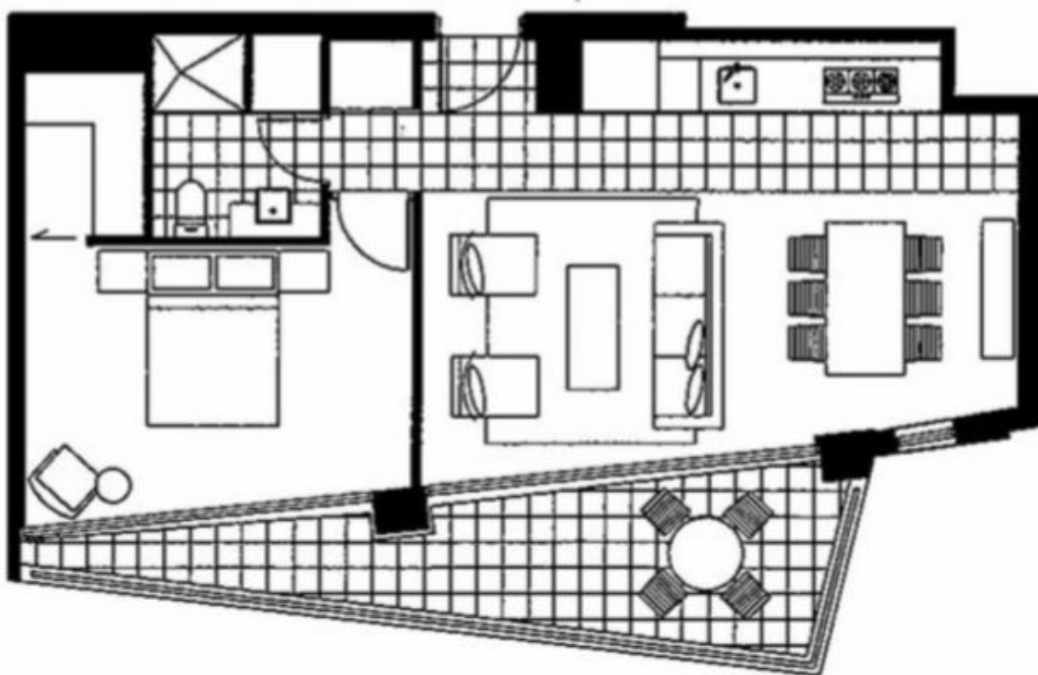
**Type:** Apartment

**Date Available:** 20/03/2023

**<https://www.resbymirvac.com>**



1 1 1



## LEVEL 12

Please note that this floor plan is a guide only.  
The information contained herein is not  
guaranteed. Dimensions are approximate.  
Prospective purchasers must rely on their own  
enquiries.



real estate  
services  
by mirvac

# 1208/60 Lorimer St

# DOCKLANDS

Plans shown are only indicative of layout. Dimensions are approximate.

**Docklands, VIC**  
1208/60 Lorimer Street