



Docklands, VIC

1208/50 Lorimer Street

2 **2** **2** 
BED BATH CAR

Impressive 2Bedroom apartment in Tower 1

Welcome to Tower 1, Yarra's Edge

Situated within Mirvac's prestigious Yarra's Edge precinct this luxurious apartment located on the 12th floor of Tower 1 has it all! Residents may enjoy access to Mirvac's state of the art Rek Dek facilities at the base of Tower 1; comprising of a 25M lap pool, spa, sauna and gymnasium.

This 2Bedroom apartment features;
Large living and dining area flowing to balcony
Gourmet kitchen with European appliances
Large island bench with ample cupboards and drawers
Pull Out Pantry
Separate Laundry

\$800 per week

Contact: Aleiasha Clark
03 9645 1199
0491 174 507

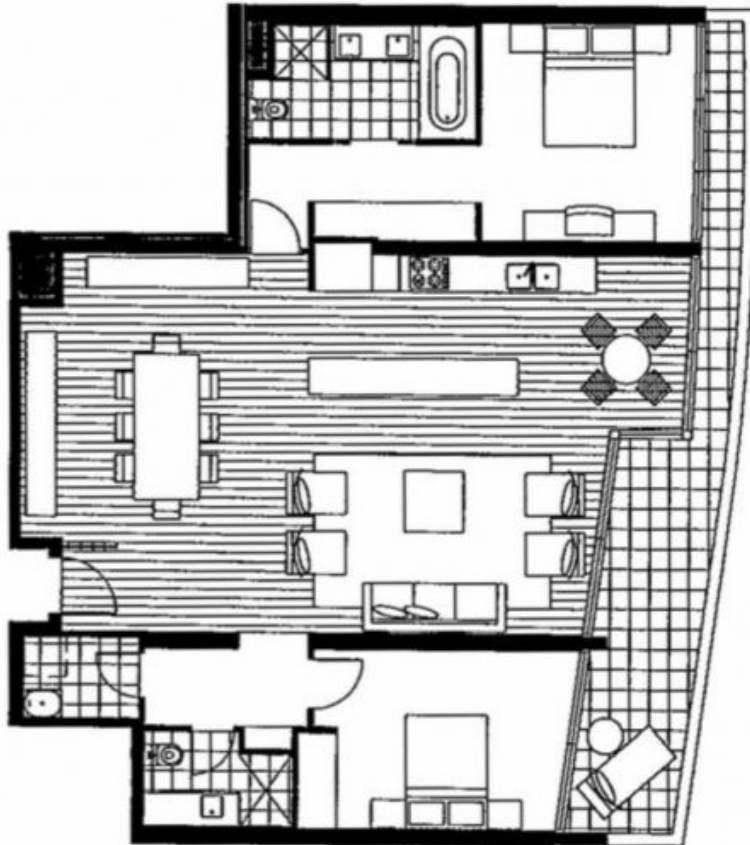
Type: Apartment

Date Available: 19/04/2023

<https://www.resbymirvac.com>



2 2 2



LEVEL 12

Please note that this floor plan is a guide only.
The information contained herein is not
guaranteed. Dimensions are approximate.
Prospective purchasers must rely on their own
enquiries.



1208/50 Lorimer Street

DOCKLANDS

Plans shown are only indicative of layout. Dimensions are approximate.

Docklands, VIC
1208/50 Lorimer Street