



Docklands, VIC

1208/50 Lorimer Street



Impressive 2Bedroom apartment in Tower 1

Welcome to Tower 1, Yarra's Edge

Situated within Mirvac's prestigious Yarra's Edge precinct this luxurious apartment located on the 12th floor of Tower 1 has it all! Residents may enjoy access to Mirvac's state of the art Rek Dek facilities at the base of Tower 1; comprising of a 25M lap pool, spa, sauna and gymnasium.

This 2Bedroom apartment features;
 Large living and dining area flowing to balcony
 Gourmet kitchen with European appliances
 Large island bench with ample cupboards and drawers
 Pull Out Pantry
 Separate Laundry

\$800 per week

Contact: Aleiasha Clark
 03 9645 1199
 0491 174 507
 Anthony Yau
 0396451199
 0408 527 174

Type: Apartment

Date Available: 19/04/2023

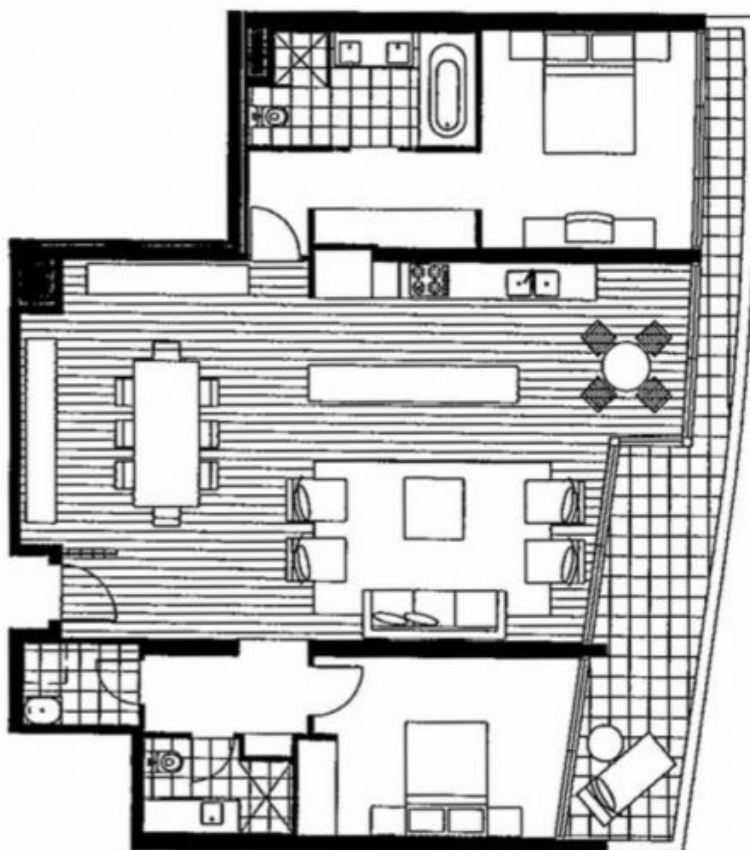
<https://www.resbymirvac.com>



2

2

2



LEVEL 12

Please note that this floor plan is a guide only.
The information contained herein is not
guaranteed. Dimensions are approximate.
Prospective purchasers must rely on their own
enquiries.



real estate
services
by mirvac

1208/50 Lorimer Street

DOCKLANDS

Plans shown are only indicative of layout. Dimensions are approximate.

Docklands, VIC
1208/50 Lorimer Street