



Docklands, VIC

1403/50 Lorimer Street

2
BED

2
BATH

2
CAR



Sunset views over Yarra's Edge marina

Welcome to Yarra's Edge, Docklands' most prestigious riverside community.

Here in Yarra's Edge you will find yourself in an perfectly positioned waterfront location, only moments away from an array of cafes, restaurants, parks, Yarra's Edge promenade and IGA supermarket.

This HUGE 2Bedroom plus storage abode features;
Spectacular views of the Yarra's Edge marina
Generous living and dining zone flowing to larger waterfront balcony
Stylish entertainers kitchen with island bench
Ample storage and European kitchen appliances
Intercom, security access

\$950 per week

Contact: Aleiasha Clark
03 9645 1199
0491 174 507

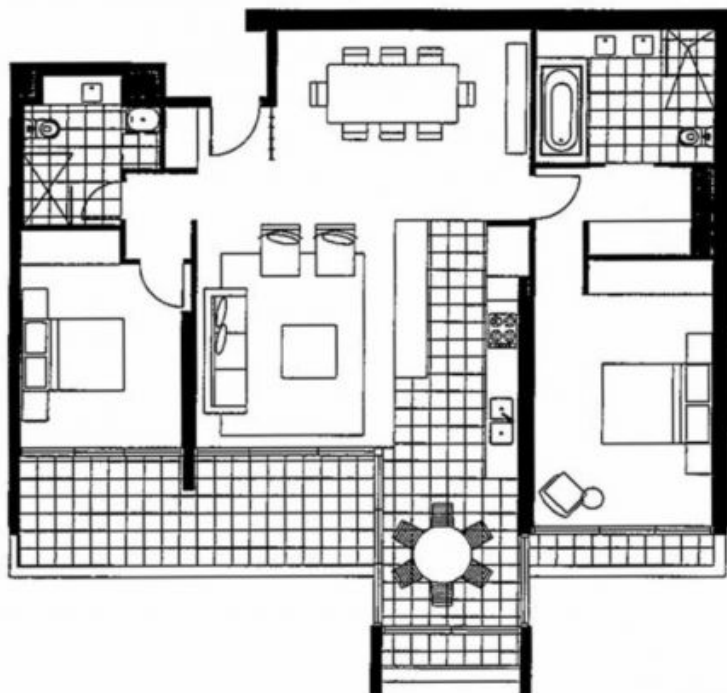
Type: Apartment

Date Available: 27/03/2023

<https://www.resbymirvac.com>



2 2 2



Location Map



LEVEL 14

Please note that this floor plan is a guide only.
The information contained herein is not
guaranteed. Dimensions are approximate.
Prospective purchasers must rely on their own
enquiries.



**real estate
services**
by mirvac

1403/50 Lorimer Street

DOCKLANDS

Plans shown are only indicative of layout. Dimensions are approximate.

Docklands, VIC
1403/50 Lorimer Street