



## St Leonards, NSW

1608/472 Pacific Highway

**2** BED **2** BATH **1** CAR 

### 16th Floor Northeast Aspect Home Offering Luxury Mirvac Lifestyle

With sweeping North east views that claim the ocean waters as its centerpiece, this apartment promises a lifestyle of sophistication in the resort-style 'St Leonards Square' building. Stay in and enjoy sleek open plan in/outdoor entertaining or step out to the building's gorgeous shared indoor lap pool, gym, spa, sauna, function rooms, and terrace. Step out to shops and cafes.

- ? Floor-to-ceiling glass windows with dazzling day/night views
- ? Open plan kitchen, living/dining flow to covered balcony
- ? Stone benchtops and gas stainless steel Miele appliances
- ? Generous bedrooms with built-in robes, one with an ensuite
- ? Stylish fully tiled bathrooms, one with a desirable bathtub

**Sold \$1,348,000**

**Council Rates:** \$352/qtr (approx)

**Strata Rates:** \$1,618/qtr (approx)

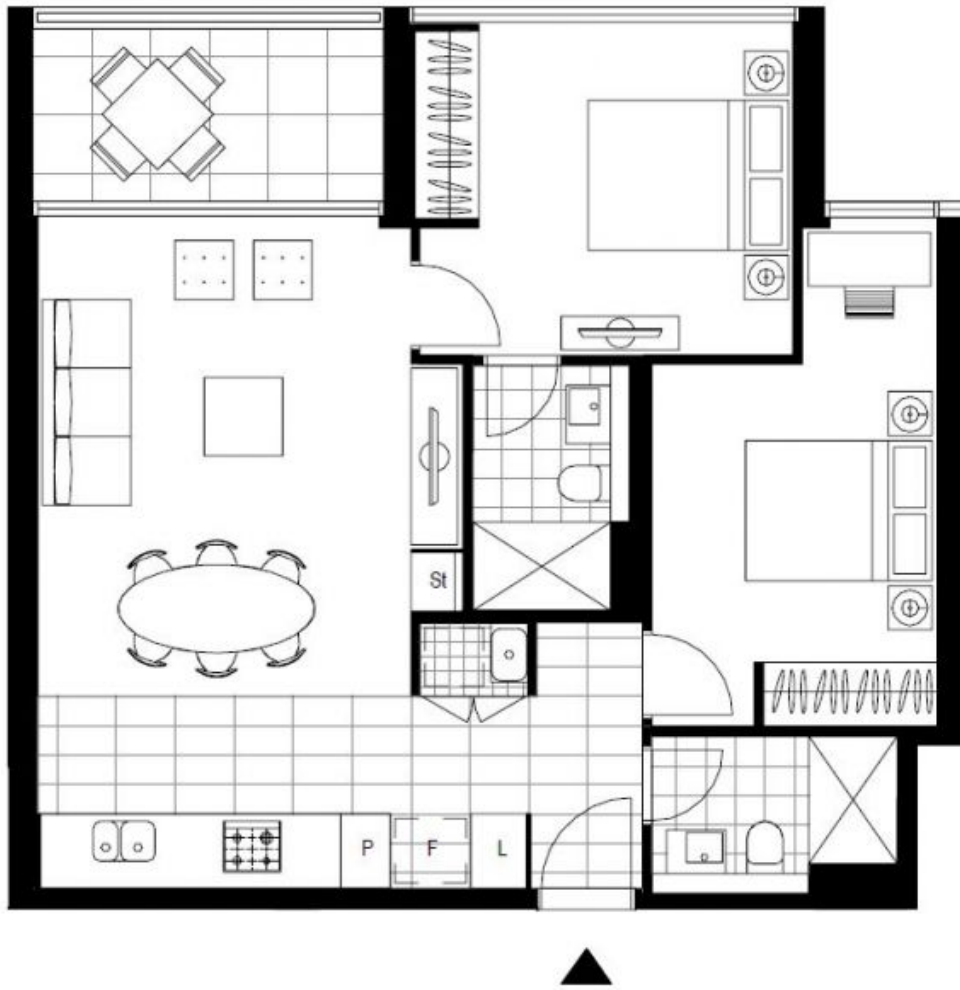
**Contact:** William Kwok  
0285888888  
0481 702 370  
William Kwok  
0285888888  
0481 702 370

**Type:** Apartment

**Sold Date:** 05/05/2023

**Land:** 75Square Metres

<https://www.resbymirvac.com>



Plans shown are only indicative of layout. Dimensions are approximate.

**St Leonards, NSW**  
1608/472 Pacific Highway