

Glebe, NSW

309/1 Cullen Close

1
BED

1
BATH



Generously Proportioned 1 Bedroom Apartment in Vance

Welcome to Harold Park, Glebe's Secret Backyard.

Here in Harold Park you will find yourself in an idyllic parkside location, with only a short walk to Glebe Foreshore. Just meters away, The Tramsheds retail precinct resides featuring cafes, a grocery store, restaurants and a medical centre.

This 64sqm, 1-bedroom apartment features:

- Spacious bedroom with floor-to-ceiling built-in wardrobes
- Open-plan & functional living and dining area, with access to generous balcony

Deposit Taken | \$850 per week

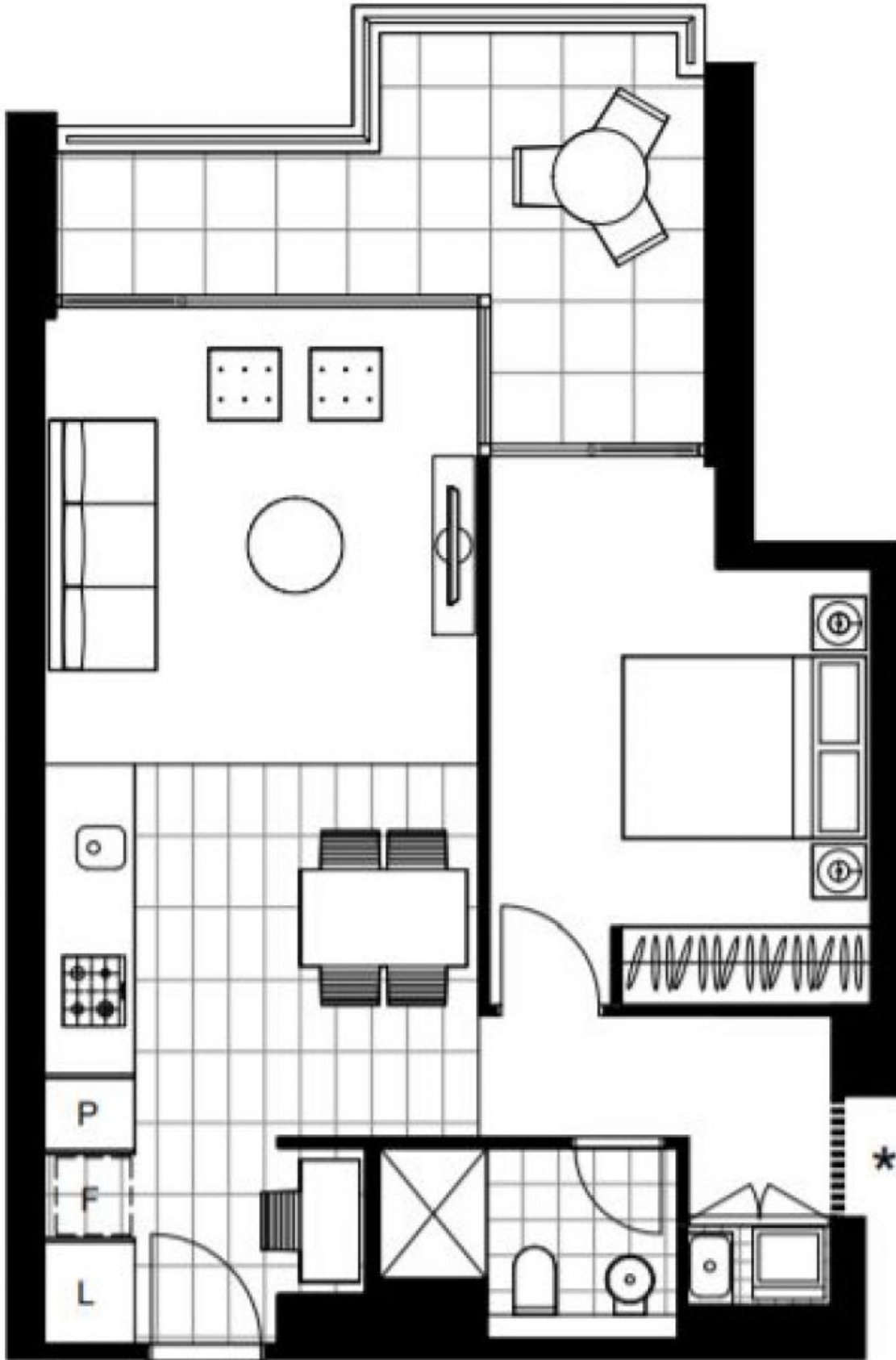
Contact: Naz Sabzpour
02 8588 8888
0401 545 440

Type: Apartment

Date Available: 20/03/2023

Bond: \$3000

<https://www.resbymirvac.com>



Plans shown are only indicative of layout. Dimensions are approximate.

Glebe, NSW
309/1 Cullen Close