

## Glebe, NSW

612/105 Ross Street

**3** BED **2** BATH **2** CAR 

### Park facing 3-Bedroom Apartment in Harold Park

Welcome to Harold Park!

Here in Harold Park you will find yourself in an idyllic parkside location, with only a short walk to Glebe Foreshore. Just meters away, The Tramsheds retail precinct resides featuring cafes, a grocery store, restaurants and a medical centre.

This 151sqm, 6th floor Apartment features:

- Large bedrooms with floor to ceiling built-in wardrobes
- Open-plan living and dining area flowing onto balcony
- Modern kitchen with stone benchtops and Miele appliances
- Sleek bathrooms with plenty of storage, bath in ensuite

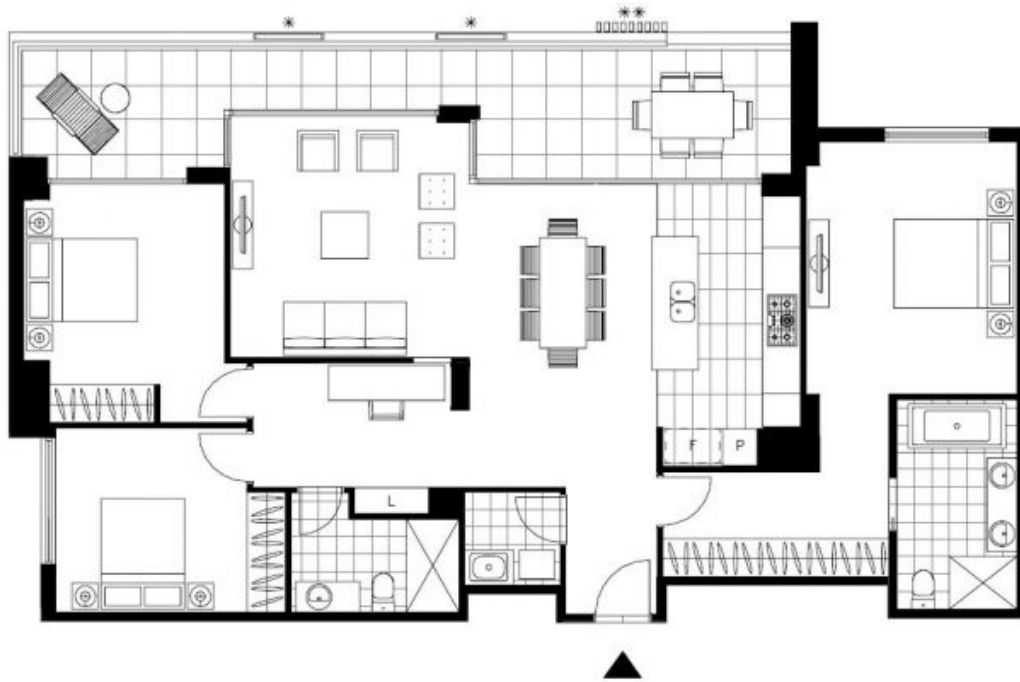
### Deposit Taken | Park Facing!

**Contact:** Naz Sabzpour  
02 8588 8888  
0401 545 440

**Type:** Apartment

**Date Available:** 07/04/2023

<https://www.resbymirvac.com>



Plans shown are only indicative of layout. Dimensions are approximate.

**Glebe, NSW**  
612/105 Ross Street