



**Glebe, NSW**  
101/159 Ross Street

**1** BED **1** BATH



**Sold by Emily & William**

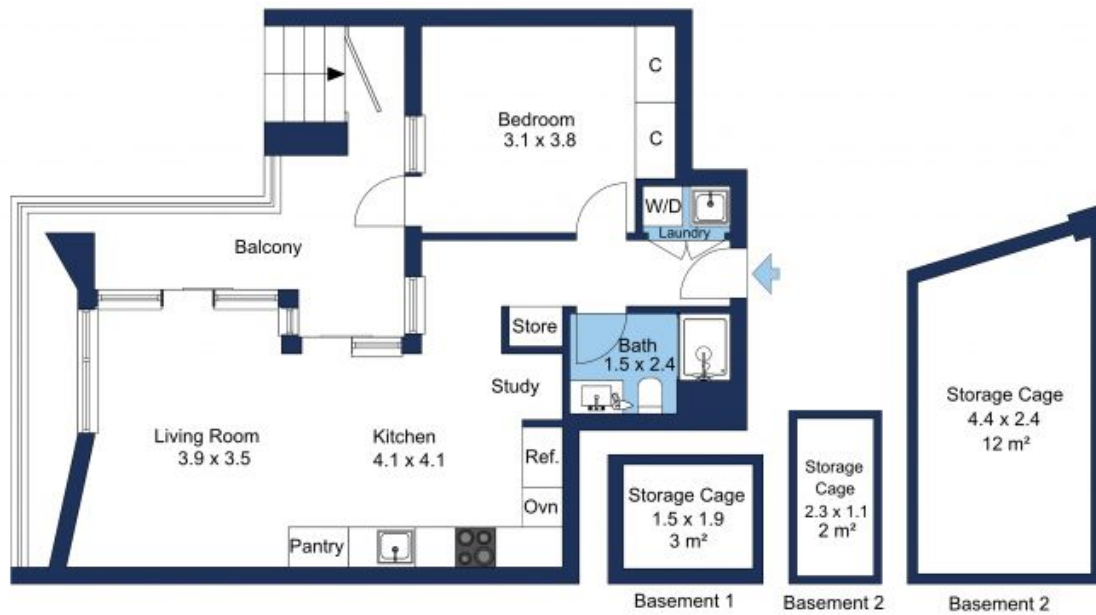
Enjoying a ground floor position with a wraparound terrace, this villa-style apartment is divine for everyday living and open plan in/outdoor entertaining. High ceilings, clean lines and sleek finishes are showcased throughout the generous light-filled interiors. Leafy local outlooks provide a pleasant backdrop. Stoll to the nearby Tramsheds for a coffee, gelato, a delicious meal or groceries.

- ? Private street access, three storage cages, huge 84sqm on title
- ? Storage cage No. 1 is 2sqm, No. 2 is 3sqm and No. 3 is 12sqm
- ? Spacious living/dining with porcelain timber look-like tiles
- ? Wraparound entertaining terrace with lovely local outlooks
- ? Stone kitchen, gas stainless steel Miele appliances, dishwasher
- ? Generous bedroom with built-in robe, sleek fully tiled bathroom

**Sold \$858,500**

**Council Rates:** \$286/qtr (approx)  
**Strata Rates:** \$789/qtr (approx)  
**Contact:** William Kwok  
 0285888888  
 0481 702 370  
 William Kwok  
 0285888888  
 0481 702 370

**Type:** Apartment  
**Sold Date:** 09/03/2023  
<https://www.resbymirvac.com>



The floor plan is not to scale; measurements are indicative and in metres. Exterior elements are not in position. Plans should not be relied on. Interested parties should make and rely on their own enquiries.

Plans shown are only indicative of layout. Dimensions are approximate.

**Glebe, NSW**  
101/159 Ross Street