



Waterloo, NSW

1603/15 Lachlan Street

2 **2** **1** **RES**
BED BATH CAR

Bright & Sunny 2 Bedroom Apartment with Garden Views in 'The Finery', Waterloo

Welcome to The Finery, Waterloo

Living within The Finery, you will find yourself enjoying resident access to the rooftop plunge pool & BBQ area with restaurants at your doorstep. Located within minutes of East Village retail precinct and with public transport easily accessible, as a resident you will find yourself being a part of a connected and convenient community.

This 6th floor, Mirvac apartment features:

- Two spacious bedrooms with built-in wardrobes
- Open-plan living and dining area, flowing onto balcony

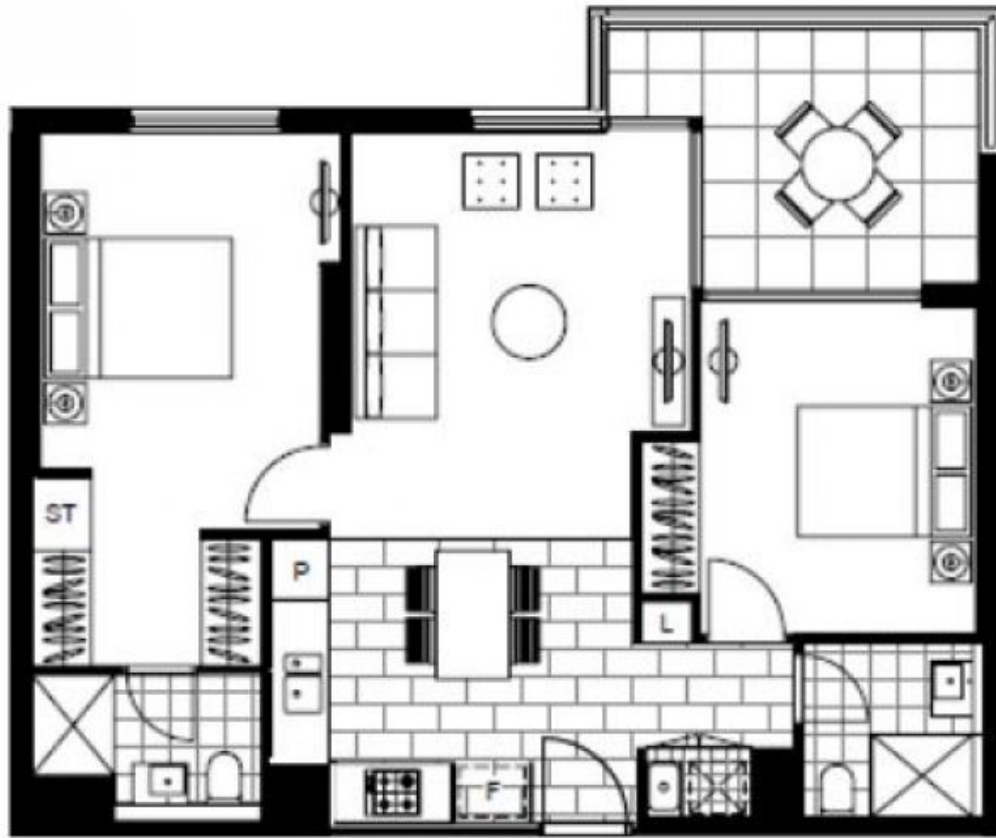
DEPOSIT TAKEN | FIRST INSPECTION

Contact: Carmen Whiteley
02 8588 8888
0497 555 519

Type: Apartment

Date Available: 20/02/2023

<https://www.resbymirvac.com>



LEVEL 4,5,6

Plans shown are only indicative of layout. Dimensions are approximate.

Waterloo, NSW
1603/15 Lachlan Street