



Docklands, VIC

508/103 South Wharf Drive

2 BED **2** BATH **1** CAR 

Voyager apartment with oversized balcony

This Mirvac-built apartment is like a sumptuous sky-home. Promising a lifestyle of contemporary luxury. Central to Melbourne's CBD, Southbank and Port Melbourne, its convenient to well-known and thriving areas while providing its own sense of community. Complete with a membership to the Wharf Club health and wellness centre, its surrounded by waterfront walkways, green spaces, and elegant shopping, dining and entertainment and provides the ultimate in modern living.

This podium level 2Bedroom, 2Bathroom, 1Car Space apartment features;
Open plan kitchen and vast living/dining flowing to terrace
Stone bench tops, gas stainless steel appliances, dishwasher
Generous bedrooms with built-in robes
Fully tiled bathrooms

LEASED | \$800pw

Contact: Aleiasha Clark
03 9645 1199
0491 174 507

Type: Apartment

Date Available: 24/02/2023

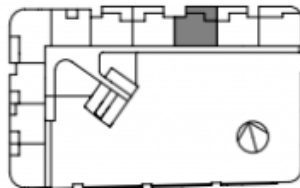
<https://www.resbymirvac.com>



LEVEL 5

APT 506

LOCATION PLAN



PODIUM
2 BEDROOM + MEDIA
APARTMENT

Internal Area 91 m²
Balcony Area 18 m²
Total Area 109 m²

Area subject to final survey, area includes balcony and/or terrace where applicable. It excludes parking and external storage areas.

IMPORTANT NOTICE

Please note that this floor plan was produced prior to completion of Construction. The information contained herein is believed to be correct but is not guaranteed. Dimensions and areas are approximate and areas are calculated in accordance with the Property Council of Australia Method of Measurement. Floor plans do not show additional features within each lot such as hot water systems, service yards, interlocks and side and rear retaining walls. Purchaser option noted on floor plans is located on some lots only and is available at purchaser cost only at time of sale. Changes will undoubtedly be made during development and subject to change without notice in accordance with the provisions of the contract for sale. Special condition 10 of the contract for sale includes further information in relation to the sale of the lot to be transferred. The furniture and furnishings depicted are not included with any sale and furnishings should not be taken to indicate the final position of power points, TV connection points and the like. Prospective purchasers must refer to the contract for sale for the list of inclusions. All graphics, including the layout, landscaping, planting, louvers and sun shading devices, are intended as a guide only and are not to be relied on as representative of the final product. Built-in furniture necessary for services are not depicted.

06/11/2015 (A)

Pergola Below

Plans shown are only indicative of layout. Dimensions are approximate.

Docklands, VIC
508/103 South Wharf Drive