

Sydney Olympic Park, NSW

20703/2 Figtree Drive

2 BED **2** BATH **1** CAR 

2 Bedroom Apartment with parking in Pavilions by Mirvac

Welcome to Pavilions in Sydney Olympic Park

Located in Sydney Olympic Park, you will find yourself within close proximity to an abundance of parklands, cafes, restaurants & bars, public transport and world-class sporting facilities. As a resident in Pavilions by Mirvac you will enjoy access to a gym, co-working space as well as a children's play area.

This 90sqm, 'Pavilions' apartment features:

- Two spacious bedrooms with built-in wardrobes
- Bright open-plan living and dining area, great for entertaining

\$750 per week | Deposit Taken!

Contact:

Christine Howison

02 8588 8888

0459 222 085

Georgia Glynn

02 8588 8888

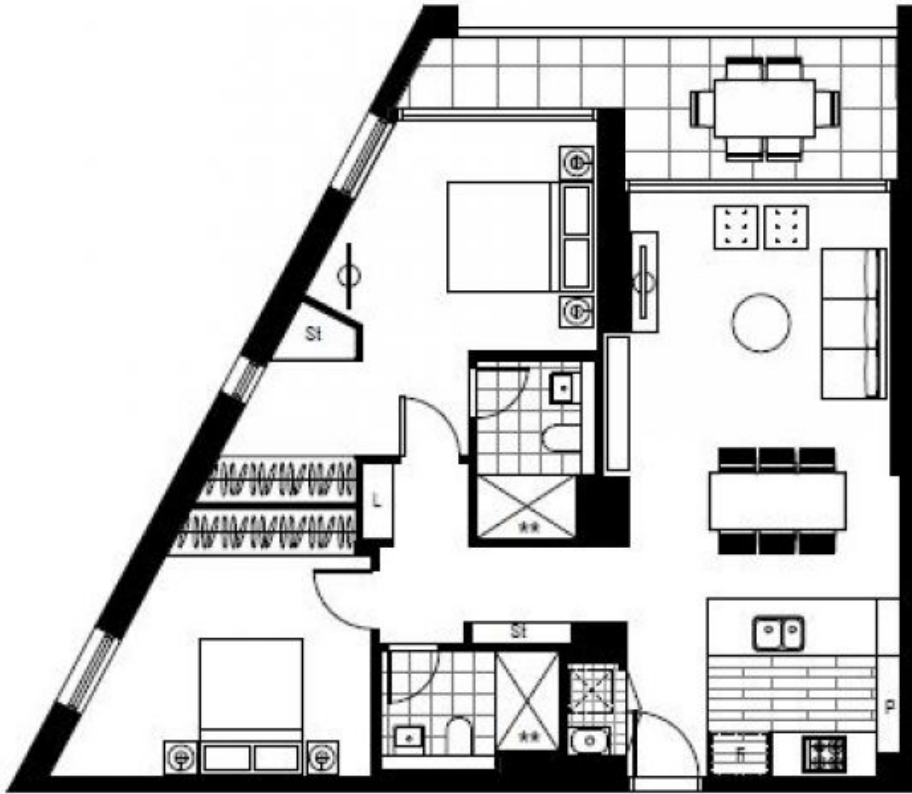
0481 388 777

Type:

Apartment

Date Available: 09/02/2023

<https://www.resbymirvac.com>



Plans shown are only indicative of layout. Dimensions are approximate.

Sydney Olympic Park, NSW
20703/2 Figtree Drive