

Glebe, NSW
5509/148 Ross Street

1 BED **1** BATH



Luxe contemporary living with generous balcony for entertaining

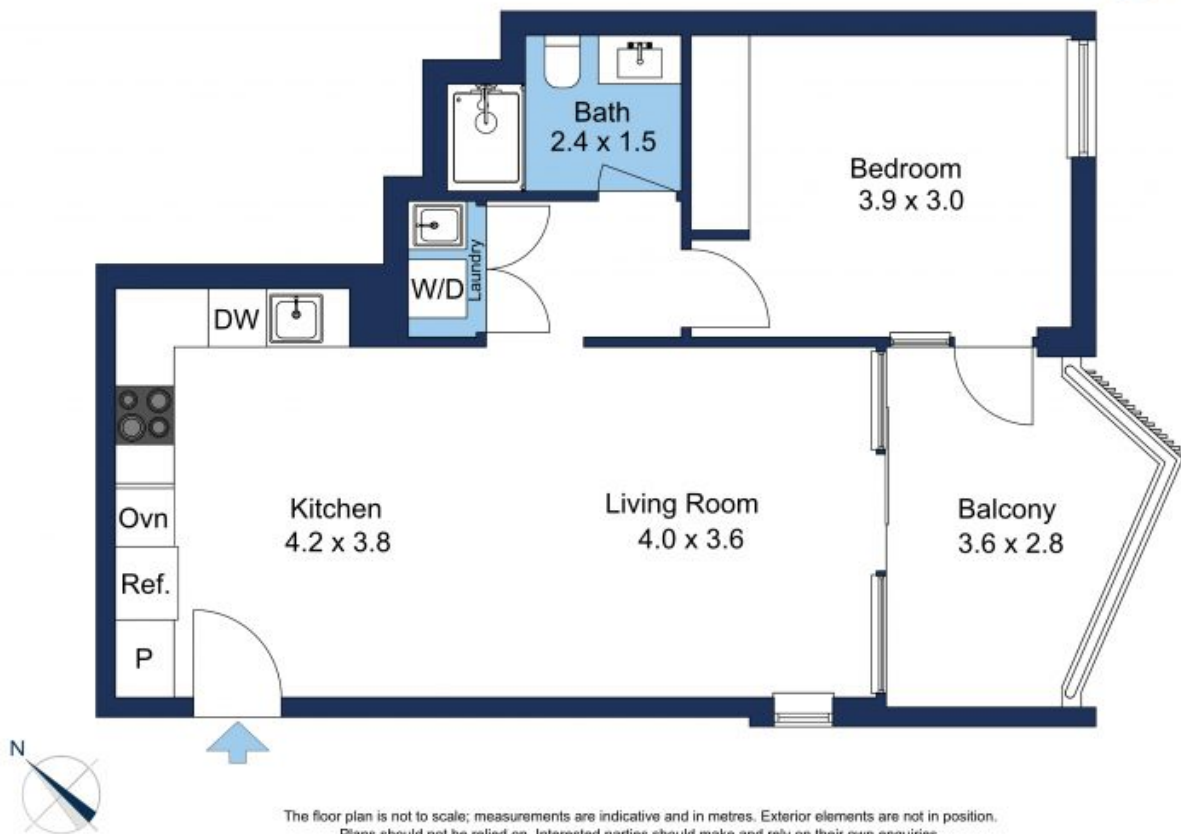
An example of understated luxury with sumptuous modern finishes, fresh neutral tones and light-filled interiors, this Harold Park apartment is a divine first home, investment property or city pad. Stay in and enjoy open plan indoor/outdoor entertaining with charming internal garden views or step out and stroll to the gorgeous Tramsheds and all the culinary attractions that make this area so vibrant.

- ? Clean lines, neutral tones, quality finishes, contemporary living
- ? Open plan kitchen and roomy living/dining flows to balcony
- ? Stone kitchen, gas stainless steel Miele appliances, dishwasher
- ? Generous bedroom with a built-in robe and access to balcony
- ? Stylish fully tiled bathroom, internal laundry, ducted heating / cooling

Sold \$735,000

Council Rates: \$286/qtr (approx)
Strata Rates: \$656/qtr (approx)
Contact: Matthew Matthews
 02 8588 8888
 0418 266 590
 William Kwok
 0285888888
 0481 702 370

Type: Apartment
Sold Date: 24/03/2023
Land: 58Square Metres
<https://www.resbymirvac.com>



Plans shown are only indicative of layout. Dimensions are approximate.

Glebe, NSW
5509/148 Ross Street