



St Leonards, NSW

610/486 Pacific Highway

2 BED **2** BATH **1** CAR 

Sleek contemporary living in a luxurious resort-style building

Designed for immaculate contemporary living and open plan in/outdoor entertaining. An executive lifestyle central to St Leonards train station and the heart of vibrant Crows Nest. It basks in a sun-drenched north aspect and enjoys an open plan indoor/outdoor design and expansive district views. Resort-style facilities complete the picture of utter luxury.

- ? Functional layout, long entrance hall, floor-to-ceiling glass
- ? Open plan kitchen and spacious living/dining flowing out
- ? Stone bench tops, gas Miele appliances plus dishwasher
- ? Balcony with far-reaching views ideal for alfresco dining
- ? Bedrooms with built-ins, fully tiled bathrooms plus laundry
- ? Ducted air conditioning, secure parking with lift access

Sold \$1,252,000

Council Rates: \$352/qtr (approx)

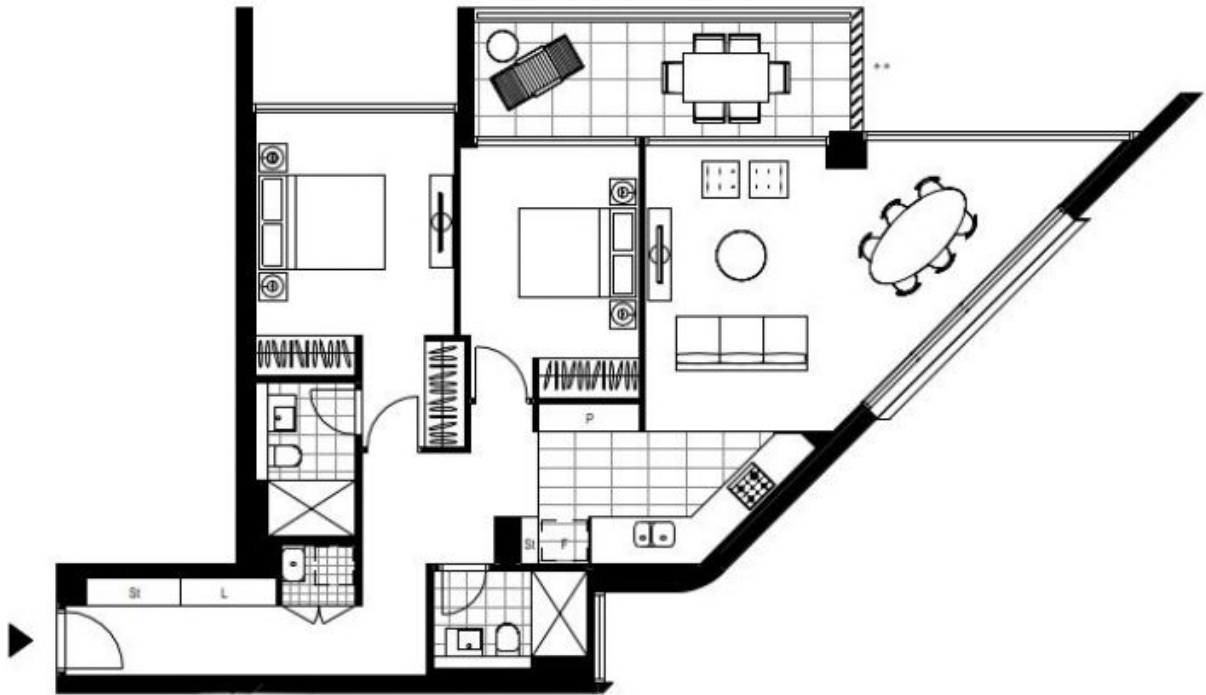
Strata Rates: \$1,469/qtr (approx)

Contact: Matthew Matthews
02 8588 8888
0418 266 590

Type: Apartment

Sold Date: 31/01/2023

<https://www.resbymirvac.com>



Plans shown are only indicative of layout. Dimensions are approximate.

St Leonards, NSW
610/486 Pacific Highway