



## St Leonards, NSW

610/486 Pacific Highway

2  
BED

2  
BATH

1  
CAR



### Sleek contemporary living in a luxurious resort-style building

Designed for immaculate contemporary living and open plan in/outdoor entertaining. An executive lifestyle central to St Leonards train station and the heart of vibrant Crows Nest. It basks in a sun-drenched north aspect and enjoys an open plan indoor/outdoor design and expansive district views. Resort-style facilities complete the picture of utter luxury.

- ? Functional layout, long entrance hall, floor-to-ceiling glass
- ? Open plan kitchen and spacious living/dining flowing out
- ? Stone bench tops, gas Miele appliances plus dishwasher
- ? Balcony with far-reaching views ideal for alfresco dining
- ? Bedrooms with built-ins, fully tiled bathrooms plus laundry
- ? Ducted air conditioning, secure parking with lift access

**Sold \$1,252,000**

**Council Rates:** \$352/qtr (approx)

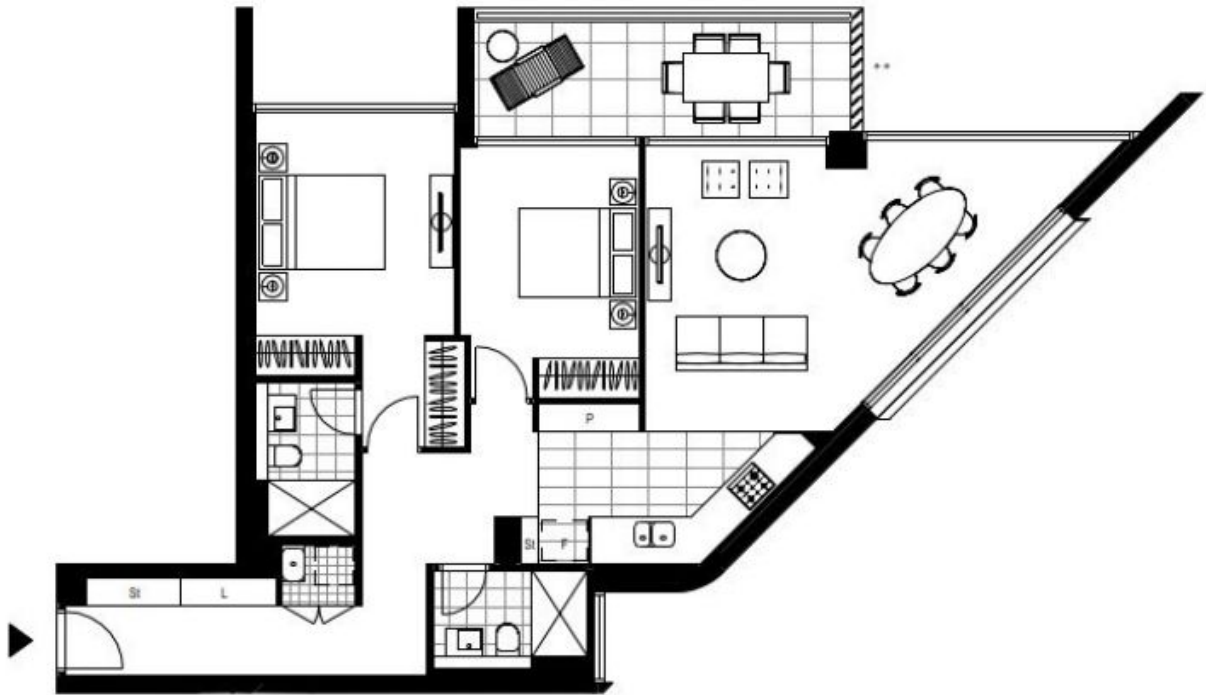
**Strata Rates:** \$1,469/qtr (approx)

**Contact:** Matthew Matthews  
02 8588 8888  
0418 266 590

**Type:** Apartment

**Sold Date:** 31/01/2023

<https://www.resbymirvac.com>



Plans shown are only indicative of layout. Dimensions are approximate.

**St Leonards, NSW**  
610/486 Pacific Highway