



## Docklands, VIC

1904/90 Lorimer Street

**3** BED **2** BATH **2** CAR 

### The Pinnacle of Luxury in Yarra's Edge

In the exclusive Tower 5 of Yarra's Edge and high on the 19th floor inclusive of stunning Port Phillip Bay, The Yarra River, and the CBD skyline views. With 195 sqm (approx.) of total space, this is an ultra-spacious 3-bedroom, 2.5-bathroom apartment in the well sought out Yarra's Edge.

- ? One of the most sought-after floorplans in Tower 5, rarely up for sale with only 5 apartments on the 19th floor
- ? North-East-South facing balcony with CBD, Marina and Bay views with stunning sunsets coming in bedrooms two and three
- ? Open living/dining with an abundance of natural light and space
- ? Chic kitchen with light colour cupboards, stainless steel Miele appliances and central bench with breakfast bar

**\$1,950,000**

**Council Rates:** \$3,000/year (approx)

**Contact:** Andrew Chen  
03 9645 1199  
0490 816 861  
Andrew Chen  
03 9645 1199  
0490 816 861

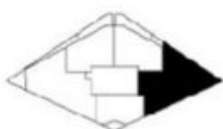
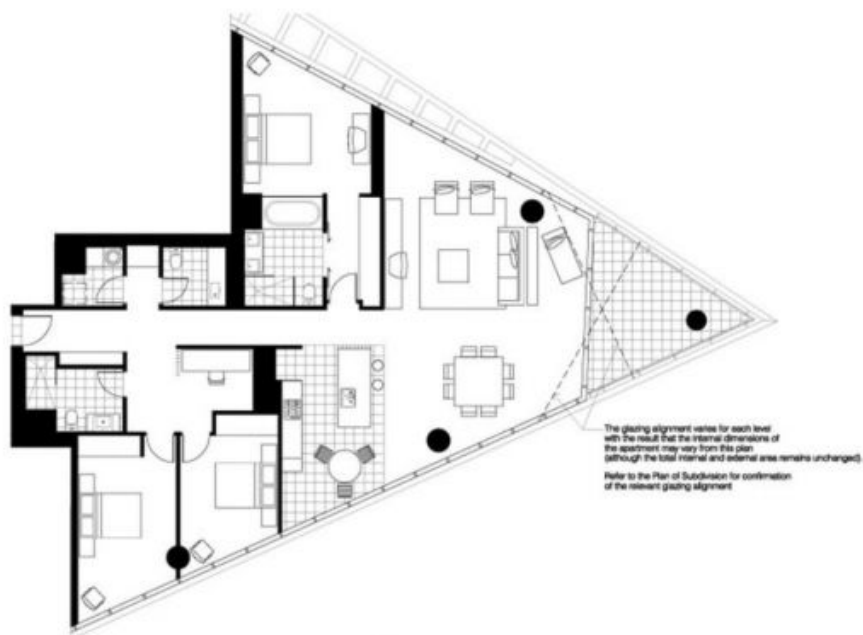
**Type:** Apartment

**Sold Date:** 29/03/2023

<https://www.resbymirvac.com>



3 2 2



## LEVEL 19

INTERNAL: 184sqm  
BALCONY: 11sqm  
FURNISHED: NO  
CARSPACE: 2  
STORAGE CAGE: 1  
AMENITY: Rek Dek Facilities

Please note that this floor plan is a guide only.  
The information contained herein is not  
guaranteed. Dimensions are approximate.  
Prospective purchasers must rely on their own  
enquiries.



# 1904/90 Lorimer Street

# DOCKLANDS

Plans shown are only indicative of layout. Dimensions are approximate.

**Docklands, VIC**  
1904/90 Lorimer Street