



Doncaster, VIC

207/65 Stables Circuit

2 BED **1** BATH **1** CAR 

Stylish 2Bedroom abode in Tullamore's 'Phoenix' apartments

Welcome to the esteemed Tullamore Estate,

Where style, privacy and timeless design blends with nature, beauty and freedom. Unique, exclusive and limited, this is a lifestyle of distinction ready for the most discerning of residents. Exceptional facilities are on offer to all residents of Phoenix apartments comprising of a resident's courtyard terrace with Teppanyaki grill and dining area as well as the residents kitchen garden.

This 2Bedroom, 1Bathroom, 1 Car Space apartment features;
Expansive undercover balcony
Spacious bedrooms with BIR's

\$550 per week

Contact: Aleiasha Clark
03 9645 1199
0491 174 507

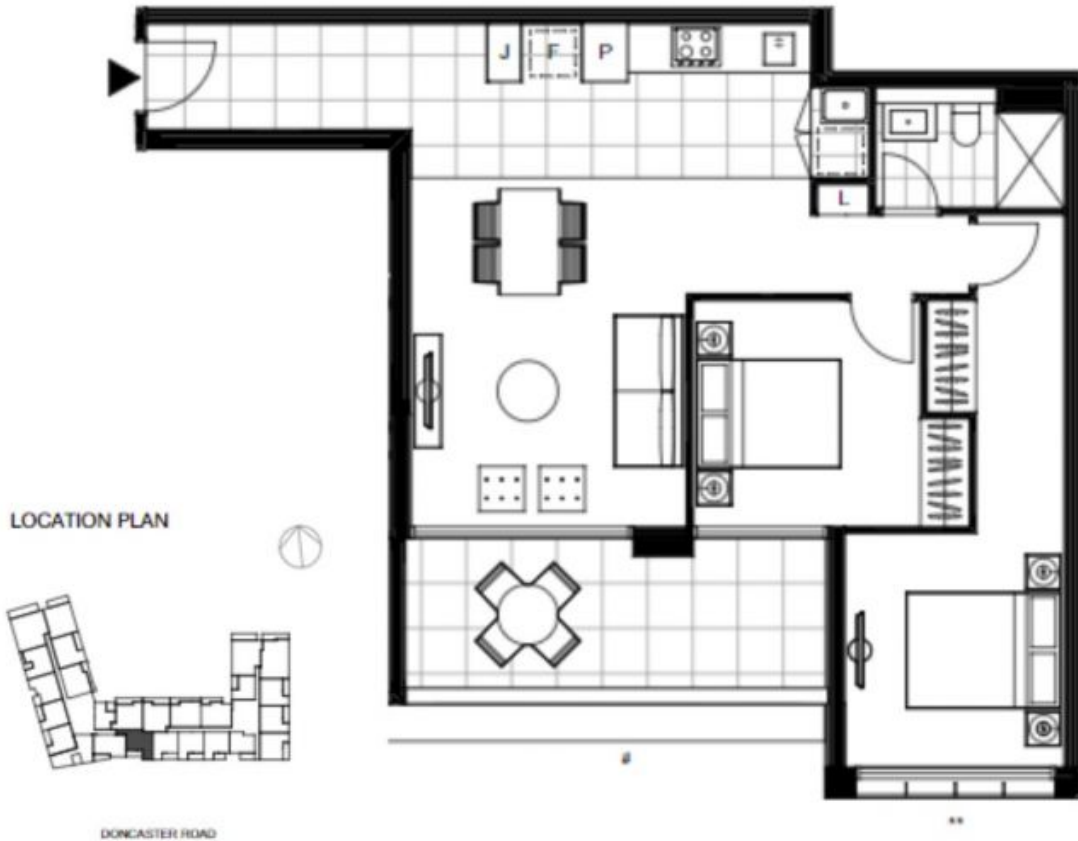
Type: Apartment

Date Available: 16/01/2023

<https://www.resbymirvac.com>



2 1 1



LEVEL 2

INTERNAL: 75m²

BALCONY: 12m²

FURNISHED: NO

CARSPACE: 1

STORAGE CAGE: **

AMENITY: Teppanyaki grill & Residents kitchen garden



real estate
services
by mirvac

207/65 Stables Circuit

DONCASTER

Plans shown are only indicative of layout. Dimensions are approximate.

Doncaster, VIC
207/65 Stables Circuit