



Glebe, NSW
102/2 Scotsman Street

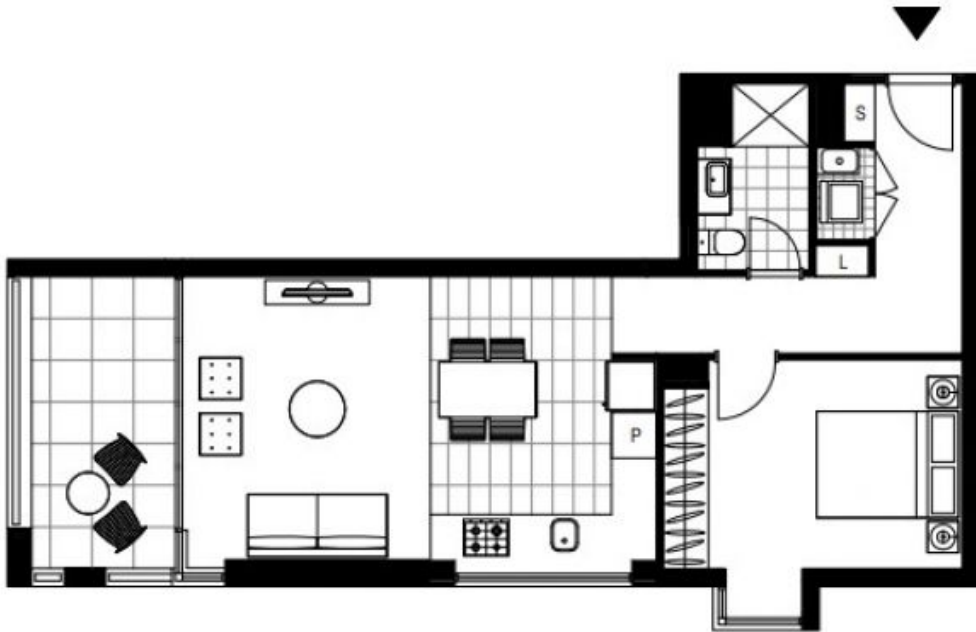
1 BED **1** BATH



Oversized one bedroom | Vacant and ready to move in
Spacious ground floor apartment with neutral tones, high-end finishes and inclusions. This exceptional apartment is set in the desirable Harold Park development. It's well-proportioned for singles, couples and those looking for a comfortable city base. Open plan indoor/outdoor entertaining is a breeze with a fluid floor plan and sizeable terrace. Step out to walking tracks and stroll to cafes.

- ? Open plan kitchen and vast living/dining flows to terrace
- ? Covered alfresco dining terrace with residential outlooks
- ? Stone kitchen, gas stainless steel Miele cooking, dishwasher
- ? Bedroom with built-in, terrace access, fully tiled bathroom
- ? Internal facilities, ducted air conditioning, security entrance
- ? Stay active with local walking tracks and foreshore reserves

Buyer Guide \$750,000
Council Rates: \$289/qtr (approx)
Strata Rates: \$833/qtr (approx)
Contact: Emma Symonds
 02 8588 8888
 0412 660 011
 Catherine Power
 02 8588 8888
 0481730480
Type: Apartment
Sold Date: 07/09/2023
Land: 65Square Metres
<https://www.resbymirvac.com>



Plans shown are only indicative of layout. Dimensions are approximate.

Glebe, NSW
102/2 Scotsman Street