



## Docklands, VIC

2006/81 South Wharf Drive

**2**  
BED

**2**  
BATH

**1**  
CAR



### LUXURY LIVING SET TO DAZZLING DAY/NIGHT VIEW

Wrapped in windows, this luxury apartment with dazzling day/night views is set in the Forge building of the coveted Yarra's Edge precinct. It's bathed in natural light and enjoys far-reaching Yarra River, Docklands and city skyline views from every room. Showcasing a sleek minimalist aesthetic, it boasts a generous and functional floor plan with nice separation between the living spaces and bedrooms. The long entrance hall leads to vast open plan indoor/outdoor entertaining while the huge main bedroom enjoys a sleek curvy design. Step out to lush manicured Wharfs Landing Park, waterfront walking and bike tracks and eateries and enjoy access to The Wharf Club gym, lap pool and fitness classes.

- ? Open plan kitchen and living/dining room set to stunning views
- ? Stone island breakfast bar, gas cooking, high-end appliances

**\$980,000**

**Council Rates:** \$1,800/year (approx)

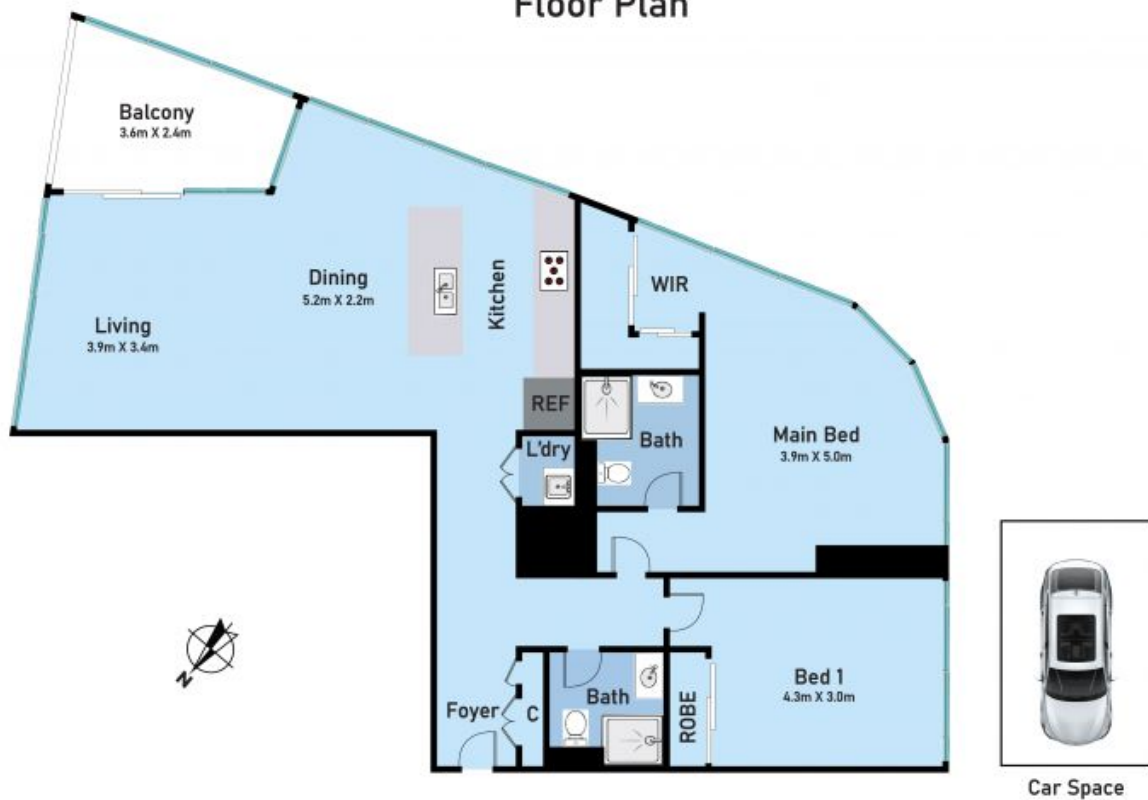
**Contact:** Andrew Chen  
03 9645 1199  
0490 816 861  
Andrew Chen  
03 9645 1199  
0490 816 861

**Type:** Apartment

**Sold Date:** 26/02/2023

<https://www.resbymirvac.com>

## Floor Plan



2006/81 South Wharf Drive, Docklands

\* Dimensions are approximate and for illustrative purposes only

Plans shown are only indicative of layout. Dimensions are approximate.

**Docklands, VIC**  
2006/81 South Wharf Drive