

## St Leonards, NSW

2402/472 Pacific Highway

**3** BED **2** BATH **2** CAR 

### Luxury 3 Bedroom Apartment with Stunning City Views in St Leonards Square

Wrapped in windows with uninterrupted views to the Harbour Bridge, this apartment offers a decadent lifestyle. It showcase clean lines, sumptuous finishes and an open plan in/outdoor design. Say in and enjoy a dazzling day/night view as you entertain or step out to resort-style facilities for residents and rapid access to shops, cafes and rail.

- ? Functional layout, long entrance hall, floor-to-ceiling glass
- ? Open plan kitchen and spacious living/dining flowing out
- ? Stone bench tops, gas Miele appliances plus dishwasher & refrigerator
- ? Balcony with Harbour Bridge views ideal for alfresco dining
- ? Bedrooms with built-ins, fully tiled bathrooms plus laundry
- ? Ducted air conditioning, secure parking with lift access

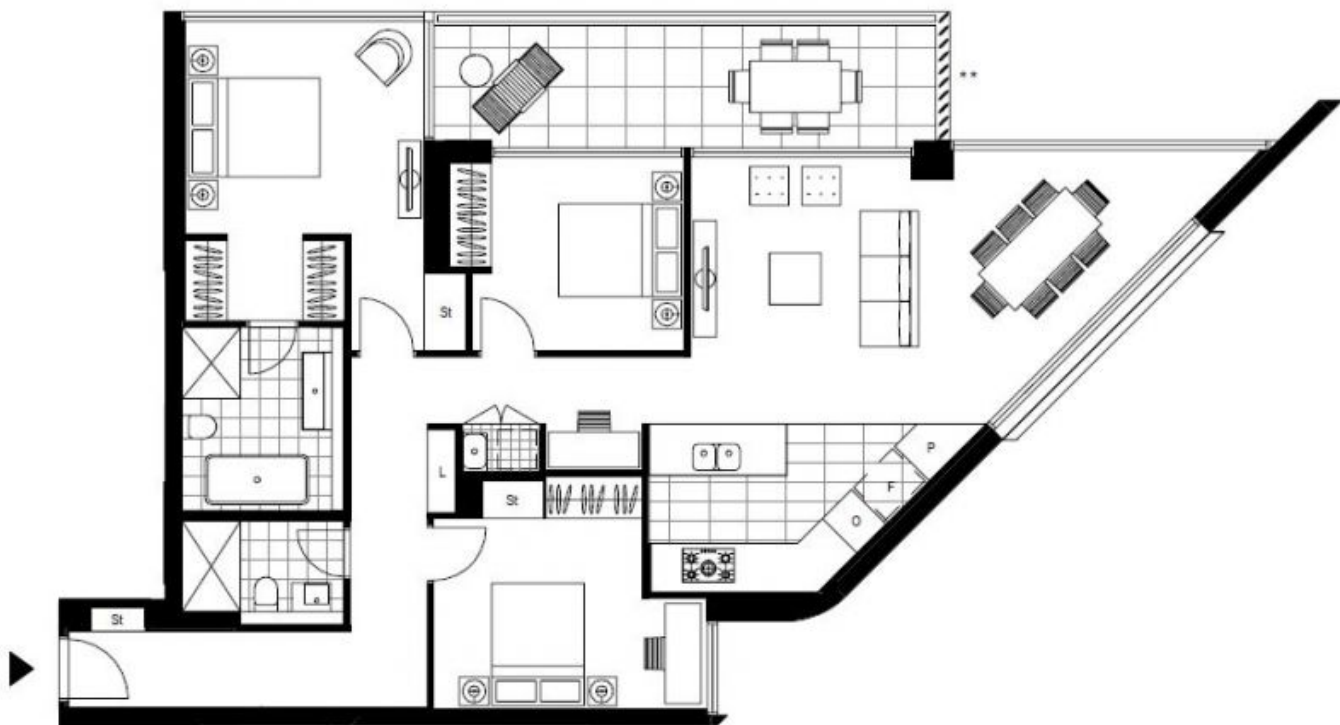
### Deposit Taken

**Contact:** Christine Howison  
02 8588 8888  
0459 222 085  
Georgia Glynn  
02 8588 8888  
0481 388 777

**Type:** Apartment

**Date Available:** 04/01/2023

<https://www.resbymirvac.com>



Plans shown are only indicative of layout. Dimensions are approximate.

**St Leonards, NSW**  
2402/472 Pacific Highway