

## Sydney Olympic Park, NSW

21309/2 Figtree Drive

**1** BED **1** BATH **1** CAR 

### Near-New 1 Bedroom Apartment with Parking in 'Pavilions', Sydney Olympic Park

Welcome to Pavilions in Sydney Olympic Park

Located in Sydney Olympic Park, you will find yourself within close proximity to an abundance of parklands, cafes, restaurants & bars, public transport and world-class sporting facilities. As a resident in Pavilions by Mirvac you will enjoy access to a gym, co-working space as well as a children's play area.

This 58sqm, 13th floor apartment features:

- Spacious bedroom with built-in wardrobes
- Open-plan living and dining area, flowing onto generous balcony with district views

**\$620 per week | Deposit Taken!**

**Contact:**

Georgia Glynn

02 8588 8888

0481 388 777

Christine Howison

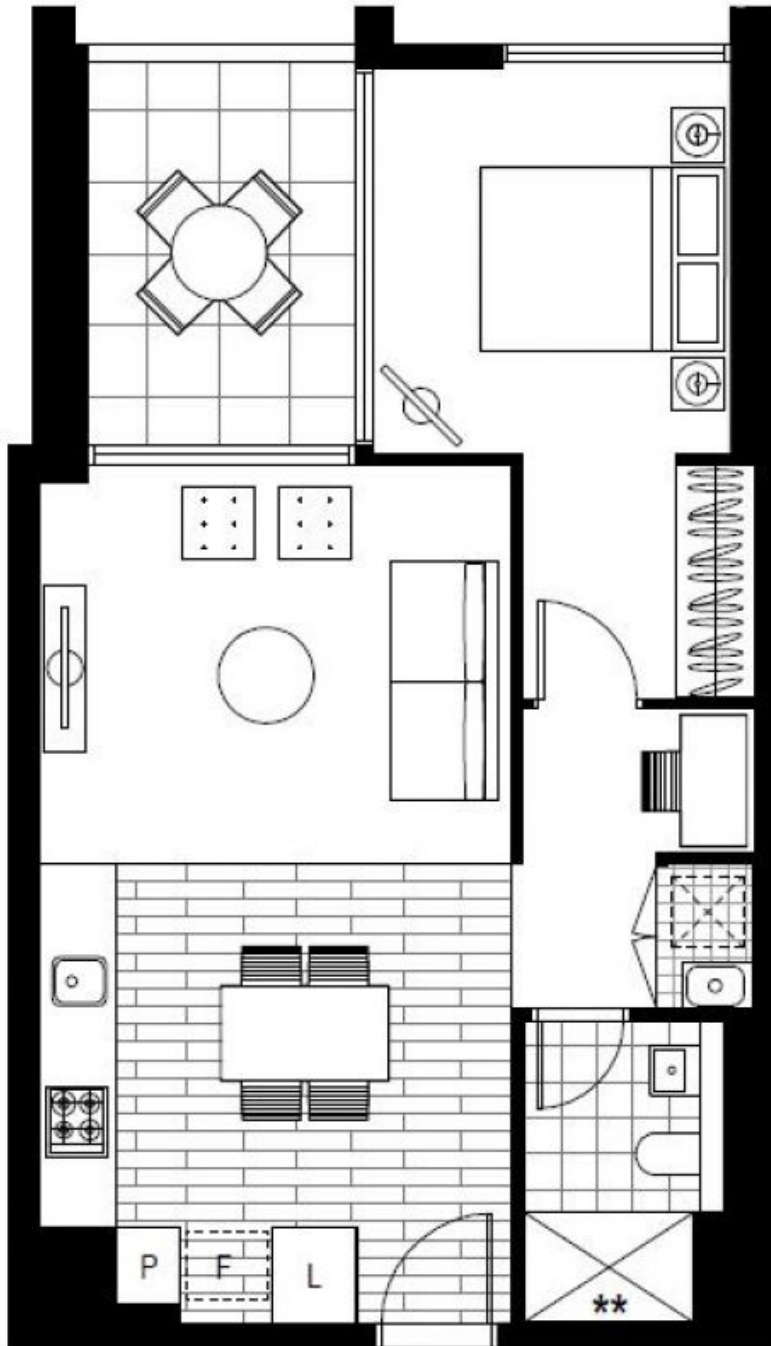
02 8588 8888

0459 222 085

**Type:** Apartment

**Date Available:** 12/01/2023

**<https://www.resbymirvac.com>**



Plans shown are only indicative of layout. Dimensions are approximate.

**Sydney Olympic Park, NSW**  
21309/2 Figtree Drive