

## Glebe, NSW

416/1A The Crescent

**2** BED **2** BATH **1** CAR 

### Furnished 2-bedroom Apartment in Harold Park

Welcome to Harold Park!

Here in Harold Park you will find yourself in an idyllic parkside location, with only a short walk to Glebe Foreshore. Just meters away, The Tramsheds retail precinct resides featuring cafes, a grocery store, restaurants and a medical centre.

This 108sqm, 4th floor Apartment features:

- Large bedrooms with generous built-in wardrobes
- Spacious living and dining area, leading to the balcony
- Contemporary kitchen with stone benchtops and Miele appliances
- Sleek bathrooms with plenty of storage, bath in ensuite

### Deposit Taken | \$1000 per week

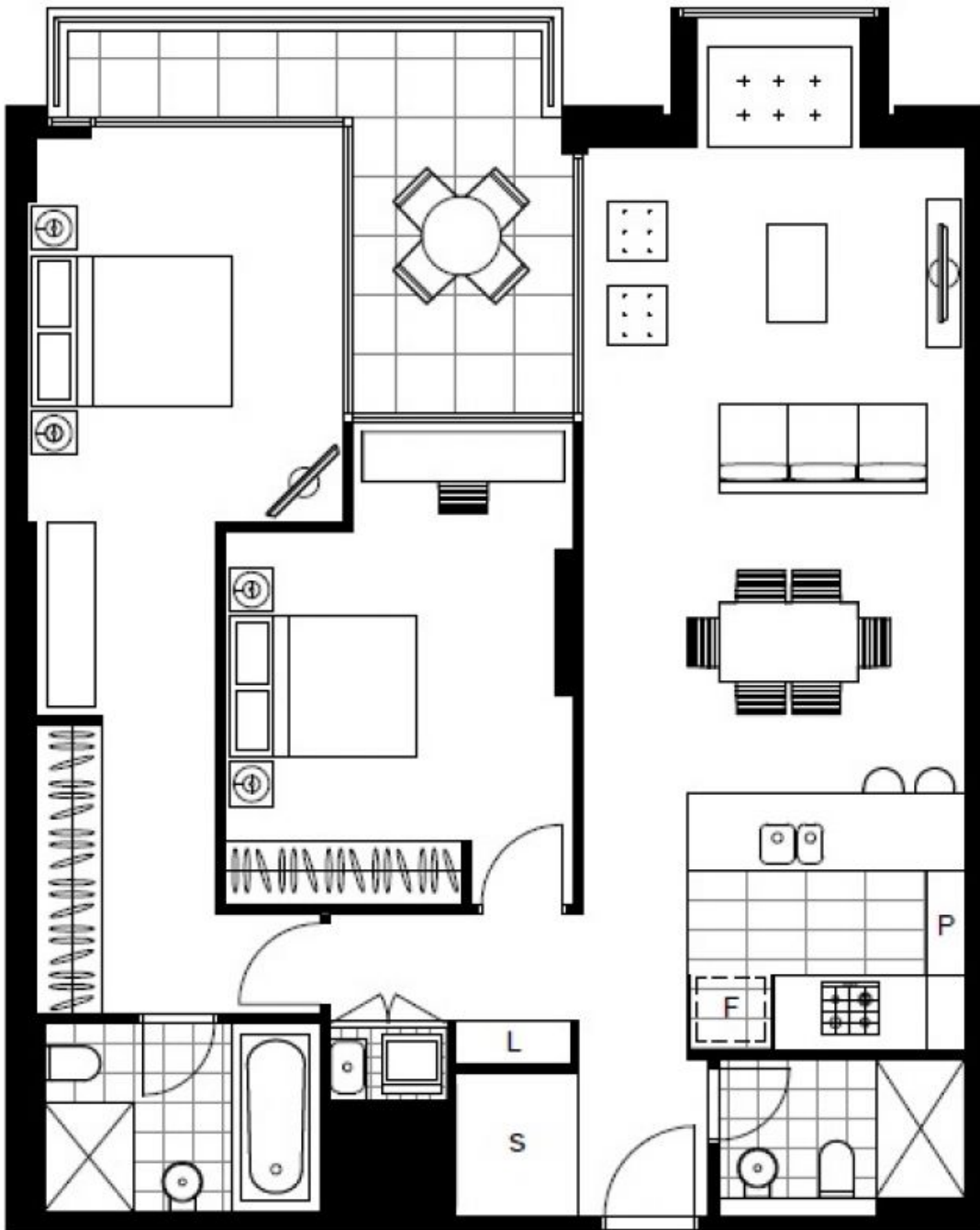
**Contact:** Naz Sabzpouri  
02 8588 8888  
0401 545 440

**Type:** Apartment

**Date Available:** 04/01/2023

**Bond:** \$4000

<https://www.resbymirvac.com>



LEVEL 4

Plans shown are only indicative of layout. Dimensions are approximate.

**Glebe, NSW**  
416/1A The Crescent